



### WELCOME TO THE ULTIMATE HOT TUB EXPERIENCE!

We sincerely hope your spa life is a pleasant experience. If problems should arise, contact your authorized Marquis® dealer. Or contact Marquis Corp. at any of the following:

Email: [service@marquiscorp.com](mailto:service@marquiscorp.com)

Web: [www.marquisspas.com](http://www.marquisspas.com)

Marquis Corp.

596 Hoffman Road

Independence, OR 97351, USA

This manual is provided to enhance your enjoyment of your spa and to prevent non-warranty situations. It is your sole responsibility to read, understand and comply with the instructions in the owner's manual. Please save your original sales receipt for reference in case of a future warranty claim. Failure to use, maintain or install the spa in compliance with this owner's manual could result in loss of warranty coverage.

### SERIAL NUMBER LOCATION

You will find the serial number on the tag in the equipment area.

### PLEASE FILL OUT AND KEEP FOR FUTURE REFERENCE

Name of Purchaser \_\_\_\_\_

Date of Purchase \_\_\_\_\_

Address \_\_\_\_\_

City \_\_\_\_\_ State \_\_\_\_\_ Zip Code \_\_\_\_\_

Telephone \_\_\_\_\_

Spa Model/Color \_\_\_\_\_

Spa Serial # \_\_\_\_\_

Pack Serial # \_\_\_\_\_

Dealer's Name \_\_\_\_\_

Dealer's Address \_\_\_\_\_

City \_\_\_\_\_ State \_\_\_\_\_ Zip Code \_\_\_\_\_

Telephone \_\_\_\_\_

Every effort has been made to ensure the accuracy of this manual. However, Marquis® reserves the right to improve its product without notice. This could create a minor variation between this manual and the actual product you receive. We apologize for any inconvenience this may cause.



• <b>IMPORTANT SAFETY INSTRUCTIONS</b>	
120V, Cord Connected Models .....	3
240V, Permanently Installed or Converted Models .....	4
All Spa Models .....	4-5
Personal Safety .....	6-7
• <b>INSTALLATION INSTRUCTIONS</b>	
Location .....	8-9
Filter Cartridges .....	10
Electrical Requirements .....	11-13
• <b>STARTING YOUR HOT TUB</b> .....	13-15
• <b>MARQUIS® HOT TUB MODELS</b>	
Show™ .....	16-18
Epic™ .....	19-20
Euphoria™ .....	21-23
Wish™ .....	24-26
Reward™ .....	27-28
Resort™ .....	29-30
Promise™ 1-Pump .....	31-32
Promise™ 2-Pump .....	33
Spirit™ .....	34-35
Rendezvous™ .....	36
• <b>MARQUIS® SPA CONTROL OPERATION</b>	
All Models .....	37-46
Wi-Fi .....	47-48
Aroma Infusions .....	48
MicroSilk® .....	49-50
Bluetooth Audio System .....	50
• <b>MARQUIS® CONTROL PANEL TROUBLESHOOTING</b>	
LCD Diagnostic Messages .....	51-54
• <b>MARQUIS® EQUIPMENT DIAGRAMS</b>	
Rendezvous & Rendezvous Discovery .....	55
Spirit .....	56
Reward, Resort .....	57
Promise 1 & 2 Pump .....	58
Epic, Euphoria, Wish .....	58
Show .....	59
• <b>MARQUIS® EQUIPMENT TROUBLESHOOTING</b>	
LCD Diagnostic Messages .....	60-65
• <b>MAINTENANCE ALL MODELS</b> .....	66-70
• <b>SPA CARE AND ENJOYMENT GUIDE ALL MODELS</b> .....	71-76
• <b>WATER TROUBLESHOOTING ALL MODELS</b> .....	77-78
• <b>DURAWOOD STEP ASSEMBLY INSTRUCTIONS</b> .....	79
• <b>MARQUIS® OWNER'S PROTECTION PLAN</b> .....	80-84



The following instructions contain important safety information. We strongly encourage you to read and apply them.

# IMPORTANT SAFETY INSTRUCTIONS

WHEN INSTALLING AND USING THIS ELECTRICAL EQUIPMENT, BASIC SAFETY PRECAUTIONS SHOULD ALWAYS BE FOLLOWED, INCLUDING THE FOLLOWING:

## 1. READ AND FOLLOW ALL INSTRUCTIONS

2. **WARNING:** To reduce the risk of injury, do not permit children to use this product unless closely supervised at all times.
3. **DANGER: RISK OF CHILD DROWNING.** Extreme caution must be exercised to prevent unauthorized access by children. To avoid accidents, ensure that children cannot use the spa or hot tub unless they are supervised at all times.

### 120 VOLT, CORD CONNECTED MODELS

4. **DANGER: RISK OF INJURY.** Connect only to a grounded source.
5. Do not bury the power cord.
6. **WARNING:** To reduce the risk of electric shock, replace a damaged cord immediately.
7. A ground terminal (pressure wire connector) is provided on the surface of the control box inside the equipment compartment. This connector should be bonded with a minimum No. 8 AWG (8.42mm<sup>2</sup>) (No. 6 AWG in Canada) solid copper wire between this unit and any metal ladders, metal water pipes, metal enclosures of electrical equipment, conduit, or metal equipment within five feet (1.52m) of the spa. If the spa is located on a reinforced concrete pad, the reinforcing steel should also be bonded to the ground terminal.
8. **WARNING:** Your spa may be equipped with a Ground Fault Circuit Interrupter (GFCI) on the end of the power supply cord. Before each use of the spa, with the plug connected to the power supply and the unit operating, press the "test" button. The unit should stop operating and the GFCI power indicator will go out. Wait thirty seconds and then reset the GFCI by pressing the "Reset" button. The GFCI power indicator will turn on, restoring power to the spa. If the interrupter does not perform in this manner, it is an indication of an electrical malfunction and the possibility of an electric shock. Disconnect the plug from the receptacle until the fault has been identified and corrected.

**240 VOLT, PERMANENTLY INSTALLED OR CONVERTED MODELS**

9. A ground terminal is provided on the control box. To reduce the risk of electric shock, connect this terminal to the grounding terminal of your electrical service or supply panel with a continuous green, insulated copper wire. The wire must be equivalent in size to the circuit conductors supplying the equipment. In addition, a bonding terminal (pressure wire connector) is provided on the outside of the control box for bonding to local ground points. To reduce the risk of electric shock, this connector should be bonded with a No. 8 AWG (8.42mm<sup>2</sup>) (No. 6 AWG in Canada) solid copper wire to any metal ladders, water pipes, or other metal within five feet (1.52m) of the spa to comply with local requirements.
10. Your spa uses ground fault circuit interrupters in the electrical sub-panel. Before each use of the spa and with the unit operating press the Test button on each breaker. The switch should click over to the "Trip" position. Wait thirty seconds and reset each GFCI breaker by switching it completely off and then completely on. The switch should then stay on. If either of the interrupters does not perform in this manner, it is an indication of an electrical malfunction and the possibility of an electric shock. Disconnect the power until the fault has been identified and corrected.

**ALL SPA MODELS**

11. Install the spa so proper drainage is provided.
12. **DANGER: RISK OF ELECTRIC SHOCK.** Install the spa at least five feet (1.52m) away from metal surfaces, in accordance with the National Electric Code ANS/NMFA70-1993. Each metal surface must be permanently connected to a minimum No. 8 (8.42mm<sup>2</sup>) (No. 6 AWG in Canada) solid copper conductor attached to the wire bonding connector on the terminal box provided for this purpose.
13. **DANGER: RISK OF ELECTRIC SHOCK.** Do not permit any appliance, such as a light, telephone, radio, or television, etc. within five feet (1.52m) of the spa or hot tub.
14. **WARNING:** To reduce the risk of injury:
  - Water temperatures between 100°F (38°C) and 104°F (40°C) are considered safe for a healthy adult. Lower water temperatures are recommended for extended use (exceeding 10 minutes) and for young children.
  - Since excessive water temperatures have a high potential for causing fetal damage during the early months of pregnancy, pregnant or possibly pregnant women should limit spa water temperatures to 100°F (38°C).
  - Before entering a spa, the user should measure the water temperature with an accurate, waterproof, fever thermometer since the tolerance of temperature-regulating devices may vary as much as +/- 5°F (3°C).
  - The use of drugs, alcohol, or medication before or during spa use may lead to unconsciousness with the possibility of drowning.
  - Persons suffering from obesity or with a medical history of heart disease, low or high blood pressure, circulatory system problems, or diabetes should consult a physician before using the spa.





- Persons using medications should consult a physician before using a spa since some medication may induce drowsiness while other medication may affect heart rate, blood pressure, and circulation.
- 15. **DANGER: TO REDUCE THE RISK OF INJURY TO PERSONS.** Do not remove the suction fittings.
- 16. **DANGER: RISK OF INJURY:** Never operate a spa if the suction guard(s) is broken or missing. Never replace a suction guard with one rated less than the flow rate marked on the original suction guard. The suction guard(s) in the spa are sized to match the specific water flow created by the pump. Should the need arise to replace the suction guard(s) or the pump, be sure that the flow rates are compatible.
- 17. **DANGER:** Children are especially sensitive to hot water. At no time should children have unsupervised access to the spa. Children must not be allowed to climb onto the spa cover. All Marquis spas are equipped with a locking cover that meets the ASTM F1346-91 Standard for Safety Covers. Always lock the child resistant locks after using the spa for your children's safety.

## 18. **SAVE THESE INSTRUCTIONS.**

**WARNING:** Do not permit electric appliances (such as a light, telephone, radio, or television) within five feet (1.52m) of the spa or hot tub.

**WARNING:** Children should not use spas or hot tubs without adult supervision.

**WARNING:** Do not use spas or hot tubs unless all suction guard(s) are installed to prevent body and hair entrapment.

**WARNING:** Do not use drugs or alcohol before or during the use of a spa or hot tub to avoid unconsciousness and possible drowning.

**WARNING:** People using medications and/or having an adverse medical history should consult a physician before using a spa.

**WARNING:** The use of alcohol, drugs, and medication can greatly increase the risk of fatal hyperthermia.

**WARNING:** Before entering the spa or hot tub measure the water temperature with an accurate thermometer.

**WARNING:** Water temperature in excess of 104°F (40°C) may be injurious to your health.

**WARNING:** Prolonged immersion in a spa or hot tub may be injurious to your health.

**WARNING:** People with infectious diseases should not use a spa.

**WARNING:** Pregnant or possibly pregnant women should consult a physician before using a spa or hot tub.

**WARNING:** To avoid injury, exercise care when entering and exiting the spa or hot tub.

**WARNING:** Do not use a spa or hot tub immediately following strenuous exercise.

**WARNING:** Maintain water chemistry in accordance with manufacturer's instructions.

**SAFETY INSTRUCTIONS FOR FRENCH SPEAKING SPA OWNERS**

**AVERTISSEMENT:** Ne pas placer d'appareil électrique (luminaire, téléphone, radio, téléviseur, etc.) moins de 1.52 m de cette cuve de relaxation.

**AVERTISSEMENT:** Ne pas laisser les enfants utiliser une cuve de relaxation sans surveillance.

**AVERTISSEMENT:** Pour éviter que les cheveux ou une partie du corps puissent être aspirés, ne pas utiliser une cuve de relaxation si les grilles de prise d'aspiration ne sont pas toutes en place.

**AVERTISSEMENT:** Pour éviter l'évanouissement et la noyade éventuelle, ne prendre ni drogue ni alcool avant d'utiliser une cuve de relaxation ni quand on s'y trouve.

**AVERTISSEMENT:** Les personnes qui prennent des médicaments ou ont des problèmes de santé devraient consulter un médecin avant d'utiliser une cuve de relaxation.

**AVERTISSEMENT:** La consommation d'alcool ou de drogue augmente considérablement les risques d'hyperthermie mortelle dans une cuve de relaxation.

**AVERTISSEMENT:** Avant d'utiliser une cuve de relaxation mesurer la température de l'eau l'aide d'un thermomètre précis.

**AVERTISSEMENT:** Il peut être dangereux pour la santé de se plonger dans de l'eau plus de 40°C.

**AVERTISSEMENT:** L'utilisation prolongée d'une cuve de relaxation peut être dangereuse pour la santé.

**AVERTISSEMENT:** Les personnes atteintes de maladies infectieuses ne devraient pas utiliser une cuve de relaxation.

**AVERTISSEMENT:** Les femmes enceintes, que leur grossesse soit confirmée ou non, devraient consulter un médecin avant d'utiliser une cuve de relaxation.

**AVERTISSEMENT:** Pour éviter des blessures, user de prudence en entrant dans une cuve de relaxation et en sortant.

**AVERTISSEMENT:** Ne pas utiliser une cuve de relaxation immédiatement après un exercice fatigant.

**ATTENTION:** La teneur de l'eau en matières dissoutes doit être conforme aux directives du fabricant.

**PERSONAL SAFETY**

Prolonged immersion in hot water can result in **HYPERTHERMIA**, a dangerous condition which occurs when the internal temperature of the body reaches a level above normal (98.6°F, 37°C). The symptoms of hyperthermia include dizziness, fainting, drowsiness, lethargy, and a body temperature above 98.6°F (37°C). The physical effects of hyperthermia include unawareness of impending hazard, failure to perceive heat, failure to recognize the need to exit the spa, physical inability to exit the spa, fetal damage in pregnant women, and unconsciousness resulting in a danger of drowning.

Other booklets about spa safety are: "Children Aren't Waterproof," "Pool and Spa Emergency Procedures For Infants and Children," "Layers of Protection" and "The Sensible Way to Enjoy Your Spa" published by Association of Pool & Spa Professionals.

**WARNING:** The use of alcohol, drugs, or medication can greatly increase the risk of fatal hyperthermia in hot tubs and spas.

Persons taking medications which induce drowsiness such as tranquilizers, antihistamines, or anticoagulants should not use the spa. Pregnant women and persons with a medical history of heart disease, diabetes, or high blood pressure should consult a physician before using the spa.

### **PERSONAL SAFETY DOs:**

- Be sure your spa is connected to the power supply correctly – only use a licensed electrical contractor.
- Shut off power supply (unplug 120V models) before draining the spa or servicing the electrical components.
- Test the Ground Fault Circuit Interrupter (GFCI) monthly.
- Always test the water temperature with an accurate thermometer before entering the spa to be sure that it's a safe temperature.
- Do not use the spa if water temperature is outside of set temperature. Remember that wet surfaces can be very slippery. Take care when entering and exiting the spa.
- Lock the DuraCover™ when the spa is not in use, whether it is empty or full of water.
- Keep the water clean and sanitized with correct chemical care.
- Turn on the jets when adding ANY chemicals to the spa water.
- Clean the filter cartridge(s) monthly to remove debris and mineral buildup which affects the performance of the hydrotherapy jets, limits the flow, or trips the high limit thermostat which will turn off the entire spa.

### **PERSONAL SAFETY DO NOTs:**

- Don't use the spa with the equipment compartment door removed.
- Don't use the spa for more than 10 minutes of time at water temperatures in excess of 102°F (39°C).
- Don't allow the jet pump(s) to operate for an extended period of time with the cover in place. Extended pump operation causes a slow heat buildup due to water friction. The spa equipment controls are equipped with a built-in safety timer that automatically shuts off the jet pump(s) after 15 minutes of continuous operation should it have been left on inadvertently.
- Don't operate the spa at any time with the filter cartridges removed.
- Don't lift or drag the cover by using the tie-down straps; always lift and carry by using the external handles.
- Don't store chemicals in the spa's equipment compartment.
- Don't hesitate to call your authorized dealer with any questions or maintenance concerns.



## LOCATION

For your portable spa to function properly and safely, it must be located on a hard, flat, level surface. Inground spas require special installation techniques and should be planned in conjunction with your authorized Marquis® dealer. Improper installation can result in structural damage to the spa and the voiding of your spa warranty. Items to discuss with your dealer include: Local construction codes, electrical service requirements, serviceability of equipment present underground obstructions such as gas, water, and telephone lines, safety measures such as fences and locks, and visibility of the spa installation from the home, street, and neighbors.

Do not shim your spa. If your pad is not level you must pour a top cap: contact a professional.

- Allow for sufficient water drainage around the spa to help preserve the equipment and support structure. This includes indoor installations.
- A filled spa can weigh up to 5,000 pounds and the location should support the weight of the filled spa.
- Locate the equipment compartment where it will be accessible. Your spa **MUST** be installed to permit access for servicing the equipment above and/or below any decks or floors. Access is essential and must allow adequate room for service. To facilitate repairs, Marquis Corp. or its agent may require access to spa equipment. It is your responsibility to provide unencumbered access. See spa diagrams for location of power supply.
- Leave access to the circuit breakers in the sub panel (240V models) or to the interrupter switch (GFCI, 120V models) on the end of the power cord.
- Be sure the spa is level and in the final position **BEFORE** filling with water. Check for power cords, tools, and hoses that may be caught underneath the spa. Do not apply power to the spa before it is completely filled with water. Damage to the pumps, heater and sensors may result.
- **IMPORTANT: DO NOT LET AN EMPTY SPA REMAIN EXPOSED TO DIRECT SUNLIGHT.**

Spa surface temperatures can reach in excess of 180°F (82°C) if left exposed to the sun. Significant damage can occur to the acrylic if this is allowed to happen, including warping and blistering of the surface. Damage, that occurs as a result of this exposure, is not covered under the warranty.

- **CAUTION:** Never try to move a spa that has not been fully drained. To do so could result in damage to the spa and physical injury to the mover. Cracks in the spa surface, exterior siding or DuraBase due to improper transport or support of the spa are not covered under the warranty.

## **OUTDOOR AND PATIO INSTALLATION**

To install the spa outdoors, we recommend a reinforced concrete pad at least four inches thick. The reinforcing material should be attached to a #8 AWG (6AWG for Canada) bonding wire per national and local electrical code.

If you place the spa on the ground, even temporarily, place the spa empty of water on concrete pavers under the entire bottom of the spa. The concrete pavers should be at least two inches thick and level across the entire surface. The spa will inevitably settle and not remain level on this surface, thus it's important to get the spa onto a solid foundation as soon as possible.

## **INSTRUCTIONS FOR PREFABRICATED SPA PADS**

If you are using a prefabricated spa pad for a foundation, please use the following guidelines:

1. Designate the area where the spa is to be installed. Please make sure the ground is flat and level.
2. Using 2"x 6" (51mm - 152mm) weather resistant lumber and 3" (76mm) outdoor deck screws, build a frame large enough for the prefabricated spa pad to fit inside with minimum 1" (25mm) clearance on all sides.
3. Install the frame in the area that has been leveled.
4. Using crushed gravel, fill the frame to the top.
5. Lay a straight piece of lumber across the frame and level any high spots in the gravel by pushing the straight lumber across the frame. Fill in any low areas with more gravel and re-level using the straight piece of lumber.
6. Compact the gravel to make the surface is hard and flat. You may need to add more gravel to bring the level back up to the top of the frame. If so, please re-level and re-compact until you have a hard, flat level surface that is even with the top of the frame.
7. Place the prefabricated spa pad on top of the gravel. Please be careful not to disturb the hard, flat, level surface.
8. Please make sure no portion of the spa pad is sitting outside or on top of the framing.
9. Place the spa on top of the pad and fill the spa with water.

## **DECK INSTALLATION**

Be sure the deck can support the weight of your filled spa by checking the deck's maximum load capacity. Consult a qualified building contractor or structural engineer. Minimum requirement is 100 lbs. (45 kg) per square foot.

## **INDOOR INSTALLATION**

There are special requirements if you place your spa indoors. Flooring material must provide adequate traction when wet. Proper drainage is essential to prevent water puddling. Proper ventilation to the area is required. The addition of a ventilation system is recommended. Please see your contractor for details.



Shut-off valve in  
open position

## SHUT-OFF VALVES

Your spa is equipped with shut-off valves (see EQUIPMENT DIAGRAM) that shut off the water flow to the equipment system for authorized Marquis® dealer service. At times, a new spa or one that has recently been serviced, may have the shut-off valves partially closed which can restrict the water flow and hinder jet performance. Be sure the valves are fully open.

## FREEZE PROTECTION

When a freeze condition is detected (which occurs when the temperature in the heater housing drops to 55°F, (13°C) the jet pump(s) is automatically activated. In areas with extremely cold winter conditions, your spa should be fine as long as it is left running at normal operating temperatures. For extra protection see your dealer for an optional freeze sensor. If you plan to turn the spa off, follow the instructions in this manual (see SUSPENDED USE OR WINTERIZING YOUR SPA).

## OVERHEATING

In the case of extended hot weather, the spa water temperature may reach and maintain 104°F to 106°F (40°C to 41°C) or higher. This is due to the ambient temperature and the full insulation in the spa cabinet. You have the option of changing when or how long the pumps will run. See SPA CONTROL OPERATION for available options.

## FILTER CARTRIDGES

Your portable spa is equipped with the Constant-Clean™ Filtration system. It features one or two Vortex filters.

**NOTE:** It is very important that the components of these filtration systems be installed properly in the proper part of the spa.

1. Hold the Vortex filter cartridge and center it in the opening of the filter housing.
2. Use the filter handle and turn the filter cartridge clockwise to screw it in place. (Use caution not to overtighten as damage may occur to threads and is not covered under warranty.)
3. Grasp the edge of the Vortex skimmer lid or Waterfall, center it over the rings and gently snap in place.
4. Replace the filter cover.

## SUCTION GUARDS

The suction guard(s) in the footwell of your spa is an opening through which the jet pump(s) draws water. The suction fittings have an integrated vacuum release built into them. In the event that a suction fitting gets blocked, air will be induced causing the pump to cavitate and the water flow interrupted. Once the blockage is removed, normal operation will resume. Suction fittings are equipped with a safety guard. Suction through the fittings can be strong. The safety guard(s) must remain in place and undamaged. A fitting with a damaged guard(s) can be dangerous, especially to small children or people with long hair. Should any part of the body become drawn to a fitting, turn the jet pump(s) off immediately. Long hair should be restrained. Never allow long hair to float freely in the spa. Replace any missing or damaged suction guard(s).



**Safety guard of suction fitting must remain in place.**

**NOTE:** It is normal for the flow rates of the suction fittings to vary from strong to barely noticeable.

## ELECTRICAL REQUIREMENTS

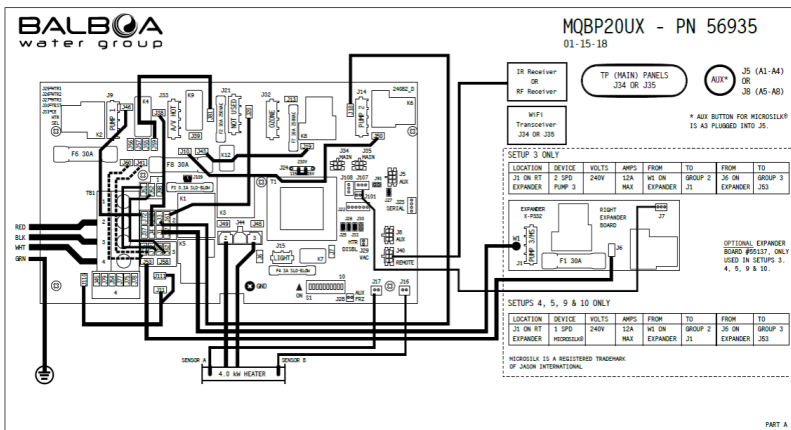
It is the responsibility of the spa owner to ensure that all electrical connections are made by a qualified electrician in accordance with all national, state, and local electrical codes in effect at the time of installation. Fuses are covered to be free of defect at time of installation only.

**NOTE:** e-Series™ hot tubs have different components. Please see the proper wiring in the e-Series™ section of this manual.

## 240 Volt

All connections must be made in accordance with the wiring diagram found on the inside of the control box cover. Connections must be made with copper conductors only – *do NOT use aluminum wire*. All conductors, circuit breakers, and fuses and the GFCI must be sized in accordance to the total amperage load as specified below.

Improperly wired spas can cause irreversible damage resulting in blown fuse and melted terminal block, and to other electrical components. Also, damage caused to components or equipment caused by high or low voltage, brown outs or electric surges is not covered under warranty.





- Permanently connected (Hard wired).
- Rated 240V, 60Hz, 50A, three wires (#6 copper) plus ground (#8 copper (8.42mm<sup>2</sup>)), [4 wires total].
- Circuit breaker or fuse size: 50A.
- A disconnecting means must be installed within sight from the equipment and at least 5 feet (1.52m) from the inside walls of the spa.
- Connect only to a circuit protected by a Class A ground Fault Circuit Interrupter (GFCI).

## 120 Volt

120 Volt spas shall be plugged into a properly grounded, grounding type 15 amp receptacle on a dedicated circuit. A dedicated circuit is a circuit with no other components that consume power, such as lights, televisions, radios, computers, or other electronic devices. These could cause your spa to malfunction by any of the following: unusual text on the control panel, slow heating, poor jet action, tripping house breaker, or blown fuses. Failure to follow these instructions could lead to premature failure of spa components that would not be covered under the warranty. The dedicated circuit shall meet the following specifications:

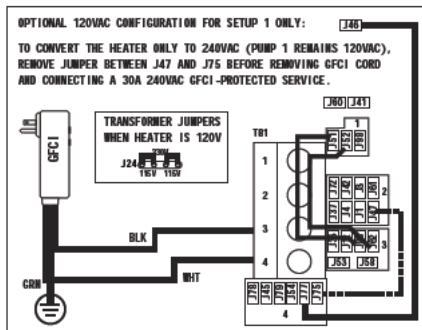
- Rated 120V, 60Hz, 15A (2 wires plus ground)
- Circuit breaker or fuse size: 15A
- The receptacle must be at least 5 feet (1.52 m) from the spa.
- The 15 foot GFCI power cord provided with the spa must be plugged directly into the receptacle. Do NOT use an extension cord or any other adaptor. Actual exposed length of cord will vary by model, but will never be less than 12 feet.

## Convert 120 Volt to 240 Volt

120 Volt spas may be converted to operate on 240V, 50A. Wiring must be performed by a licensed electrician in accordance with the NEC and any local or regional electric codes.

1. Disconnect the power: Unplug GFCI cord from wall receptacle. Disconnect cord end from terminal block and ground bar inside equipment box.
2. Move white jumpers on J24 to connect the two middle pins only. Failure to do this will result in a blown transformer.
3. For 50 amp operation Move dip switch #2 up to the on position. This will allow the heater to operate on pump 1 high speed. Install 240V power as indicated on the 240V section.
4. Remove the jumper wire connecting J75 to J47 and discard.
5. Reconnect the spa with 240V power to approved GFCI and exterior mounted disconnect.

Red (hot) wire connected to #2 on terminal block.  
Black (hot) wire connected to #3 on terminal block.  
White (neutral) wire connected to #4 on terminal block.  
Green (ground) wire routed through plastic enclosure and secured to exterior bonding lug.







Improperly wired spas are beyond Marquis Corp. control and are not covered under the warranty. Other items beyond Marquis Corp. control include, but are not limited to, damage resulting from: improper connections; accidents; failure to follow procedures and instructions defined in the Marquis® printed instructions; cleaning agents; and natural occurrences including but not limited to rodent or insect infestation, mold, lightning and other acts of nature.

## STARTUP PROCEDURE

Your spa is equipped with solid-state Comfort Controls specific to your spa model. (See **SPA CONTROL OPERATION** for your specific spa model.)

**NOTE:** Your spa has been filled and test-run at the factory. The first time your spa is filled with water, some discoloration from residual test water may appear. This will disappear when the spa is completely filled and the filtration system is functioning.

## THERAPY PUMP(S)

### Startup procedure for all models

1. Place spa on a hard, flat, level surface. Make sure the power supply is off.
2. Make sure the suction guard(s) in the footwell are in place and undamaged.
3. Open the equipment door. Tighten all disconnects and open all shut-off valves.

**NOTE:** Keep the drain valve closed at all times except when draining the spa (do not rely on the cap to stop the flow of water). Not doing so could result in damage to the drain valve due to freezing water.

4. Install filter cartridges. (See **INSTALLATION INSTRUCTIONS**, Filter Cartridges.)
5. Fill the spa with water to two-thirds of the way up the Vortex skimmer openings. The use of a *Fill Filter* is recommended, especially in areas with high mineral content in the water.
6. Turn the power on.

**WARNING:** Spa must be completely filled with water before turning on power.

7. Your spa is now in “pump priming” mode and a “Priming Mode” message displays in the LCD window of the control panel. While in this mode the spa appears idle, which lasts approximately four to five minutes if not exited manually. To exit manually, press the BACK/SET pad.
8. Allow the spa to circulate on high-speed (see **SPA CONTROL OPERATION**) for four to five minutes to discharge air from the plumbing system. Do not expect hot water immediately from the jets; the heater will take several hours to heat the water.

(Continued next page)



Vent air by slightly opening pump unions.

9. At this time the spa should have water flowing from the jets. If the pump has not primed and the water is not flowing from the jets after two minutes **TURN OFF POWER TO THE SPA** and vent air from the pumps by slightly opening the pump unions located behind the equipment door. After turning the power on again, the spa initiates a new priming mode. Repeat steps above.
10. The system requires approximately two minutes of water flow to determine the water temperature. After two minutes of water flow, the temperature is displayed as actual water temperature. After you have manually exited the priming mode (or allowed the spa to automatically exit) the LCD window momentarily displays 100°F (38°C) and then the display switches to - °F.
11. The factory default setting for water temperature is 100°F (38°C). Use the TEMP pads on the control panel to set the water temperature to the desired level. (See SPA CONTROL OPERATION.) It takes up to 24 hours to heat the water to desired temperature depending on the water temperature and voltage of your spa.
12. If water is not coming out of the jets, check to make sure the adjustable jets are open. Simply turn the jet face to open or close the jets.

Test the water for the proper chemical balance and adjust as necessary. Marquis® SpaCare products are recommended. (See **WATER TREATMENT.**)  
**PROPER CHEMICAL BALANCE IS IMPORTANT** for your safety and the longevity of your spa.



### **DURACOVER™**

When the spa is not in use, the DuraCover should be kept on the spa to retain the water's heat and to keep out dirt, leaves, etc.

For your safety and convenience, the cover is equipped with adjustable straps, safety locks, and handles. Use the exterior handles to remove and replace your cover after breaking the vacuum seal with one hand. Never attempt to open or remove the cover by grasping or pulling on the cover skirting or cover lock straps as the skirting will tear.

Marquis® suggests you use the safety locks to help keep out unintended users, prevent covers from being blown off in windy conditions and to maximize heat retention/energy efficiency. The cover and retractable cover system are not recommended for use in wind conditions reaching above 25 miles per hour. If your spa is located in an area susceptible to high winds, additional Hold-Down wind straps may be necessary to minimize cover damage.

**NOTE:** Marquis®' exclusive DuraCover is designed for optimum protection of the spa shell. Using an aftermarket cover will not provide the same protection and will void the shell warranty.

### **Open the spa cover:**

1. Unfasten all cover lock straps.
2. Place one hand under the cover skirting, between the spa and cover, to break the cover's vacuum seal. Do not use cover handles to break vacuum seal.
3. Fold the front half of the cover over onto the back half.

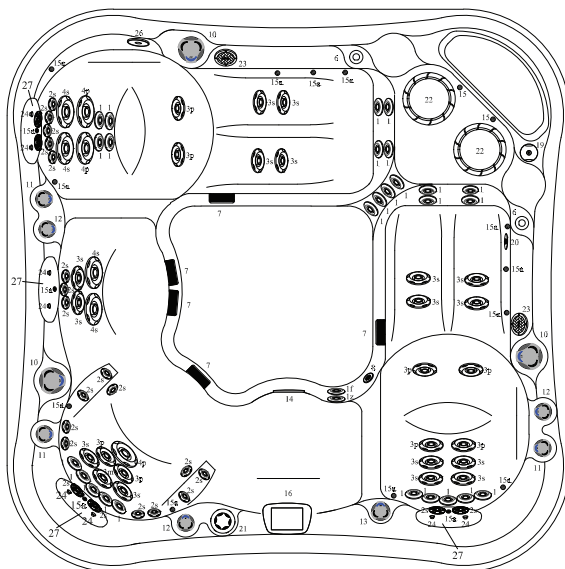
**NOTE:** Unlock and release all cover locks before attempting to open cover. Damage caused by attempting to open the cover while locked or by wind is not covered under warranty. Do not walk, stand, climb, or sit on the vinyl cover or retractable cover system. Do not use hard, sharp, or metal objects, such as a windshield scraper, to remove ice. Such objects can cut, mar, or puncture the cover's vinyl surface.

### **Close the spa cover:**

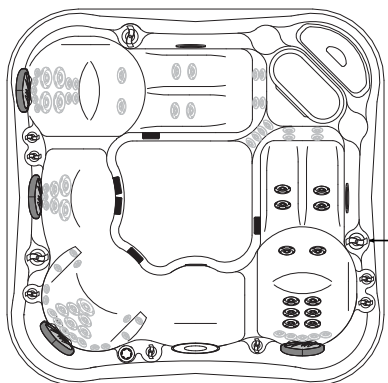
1. Slide folded cover onto one half of spa.
2. Unfold the cover by lifting the handle located on the top (front) half of the cover. Allow the unfolded half to gently drop down onto the spa.
3. Secure the cover lock straps to the spa and lock them.

**NOTE:** When opening a cover with a cover removal mechanism, use one of the manufacturer's recommended methods. Do not attempt to open the cover in any other way. Damage caused by improper opening or closing of the cover is not covered under the warranty.

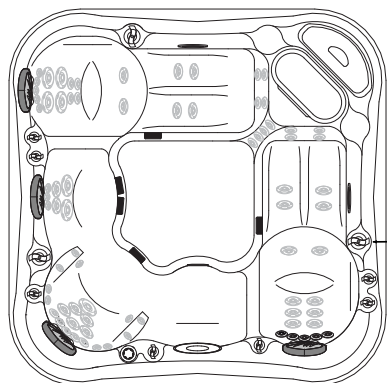
Fading, staining, torn stitching of the spa cover and broken foam cores are not covered under the warranty for any reason. Spa covers do not qualify for labor coverage under the warranty. These parts may be purchased or exchanged under warranty at your authorized Marquis® dealer.



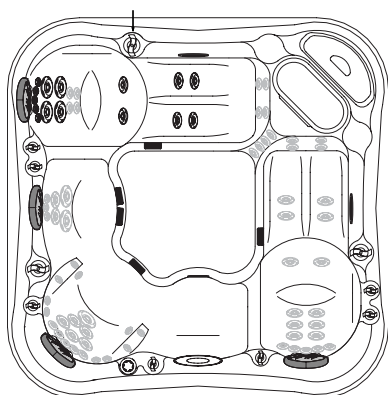
#	Component Identification	Qty.
1	HK 40™ Jets	26
1f	In-line fitting	1
1z	Ozone fitting	1
2s	HK™8 Jets Straight	24
3s	HK™12 Jets Straight	16
3p	HK™12 Jets Spin	8
3m	HK™12 Jets Multi-port	1
4s	HK™16 Jets Straight	4
4p	HK™16 Jets Spin	3
6	Waterfall Features	2
7	Suction Fittings	5
8	Floor Drain	1
10	Tri-Zone Controls	3
11	Neck Jet Valves	3
12	Air Controls	3
13	Waterfall Valve	1
14	Light	1
15	Constellation™ Lighting (option)	18
16	SpaTouch2 Control Panel	1
19	Aroma Infusions (optional)	1
20	Aroma Injector (optional)	1
21	In-Line Dispenser	1
22	Filter Canisters	2
23	Speakers (optional)	2
24	Headrest Buttons	8
26	Pump 3 Control	1
27	Headrests	4
Physical Specifications		
Dimensions	90" x 94"	229 x 239 cm
Height	35"	89cm
Corner Radius	17"	43cm
Seating Capacity/Positions	5/5	5/5
Weight Dry	1100 lbs	499 kg
Weight Full	5062 lbs	2296 kg
Water Capacity	475 gal	1798 l
Total Therapy Jets	82	82


**ZONE 1A (JETS 1)**

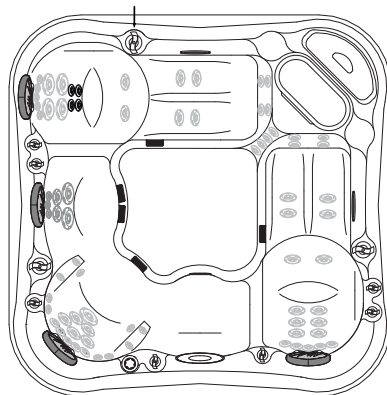
Adirondack A: all back, hips, legs and feet


**ZONE 2A (JETS 1)**

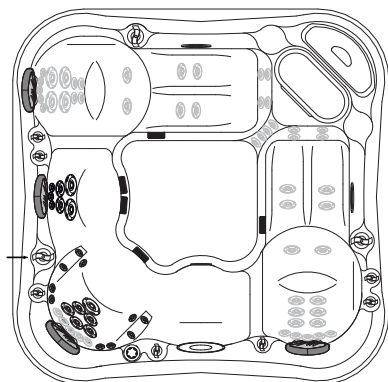
Adirondack A: upper-back


**ZONE 1B (JETS 2)**

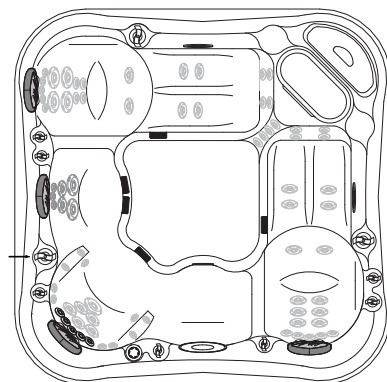
Adirondack B: upper- and mid-back, hips and feet


**ZONE 2B (JETS 2)**

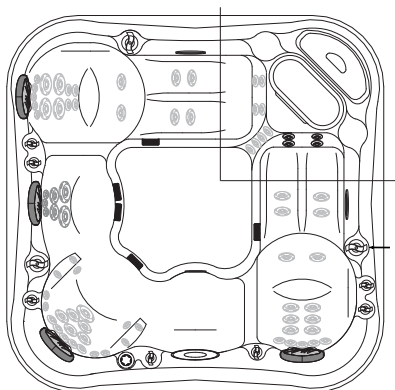
Adirondack B: lower-back


**ZONE 1C (JETS 3)**

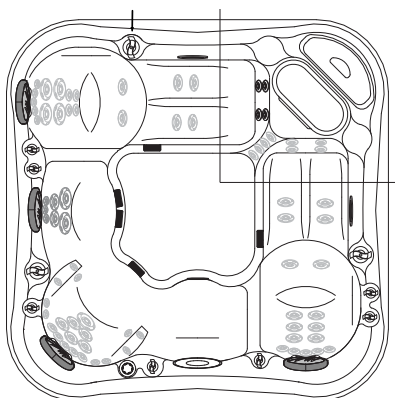
Captain's chair: mid- and lower-back, arms, knees and wrists. Seat: all back


**ZONE 2C (JETS 3)**

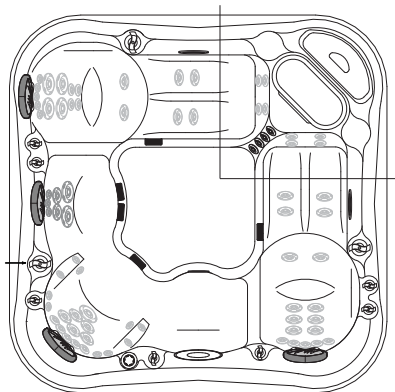
Captain's chair: upper-back


**ZONE 3A (JETS 1)**

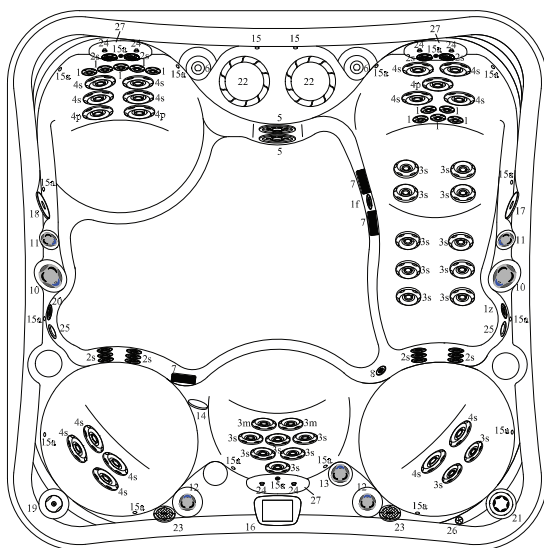
Adirondack A: feet


**ZONE 3B (JETS 2)**

Adirondack B: feet


**ZONE 3C (JETS 3)**

Therapy pillar: legs and feet

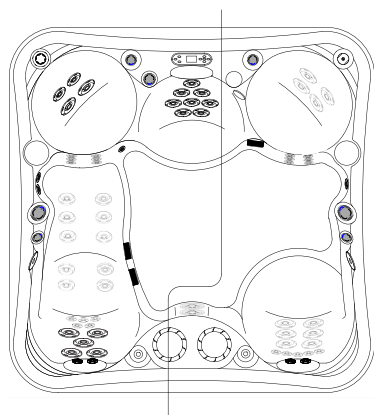


#	Component Identification	Qty.
1	HK 40™ Jets	10
1f	In-line Fitting	1
1z	Ozone Fitting	1
2s	HK™8 Jets Straight	16
3s	HK™12 Jets Straight	18
3m	HK™12 Jets Multi-port	2
4s	HK™16 Jets Straight	14
4p	HK™16 Jets Spin	3
5	Geyser Jets	2
6	Waterfall Features	2
7	Suction Fittings	3
8	Floor Drain	1
10	Tri-Zone Controls	2
11	Neck Jet Valves	2
12	Air Controls	2
13	Waterfall Valve	1
14	Light	1
15	Constellation™ Lighting (option)	19
16	SpaTouch2 Control Panel	1
17	Pump 1 Control	1
18	Pump 2 Control	1
19	Aroma Infusions (optional)	1
20	Aroma Injector (optional)	1
21	In-Line Dispenser	1
22	Filter Canisters	2
23	Speakers (optional)	2
24	Headrest Buttons	6
25	MicroSilk® Return Fittings (optional)	2
26	MicroSilk® Air Intake Fitting (optional)	1
27	Headrests	3

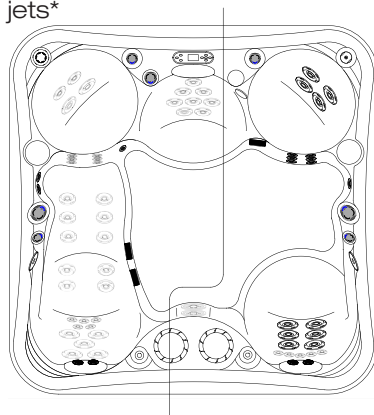
Physical Specifications	US/CAN	INTL
Dimensions	90" x 90"	229 x 229 cm
Height	35"	89 cm
Corner Radius	12"	30 cm
Seating Capacity/Positions	5/6	5/6
Weight Dry	850 lbs	386 kg
Weight Full	4603 lbs	2088 kg
Water Capacity	450 gal	1703 l
Total Therapy Jets	65	65

**ZONE 1 A**

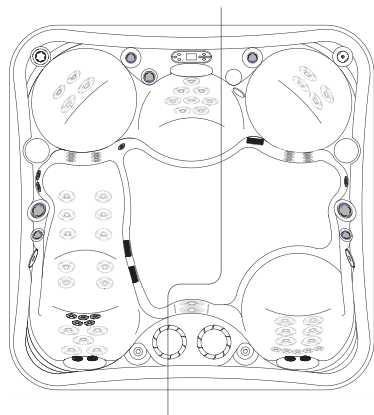
Upper- mid- and lower-back jets\*


**ZONE 2 A**

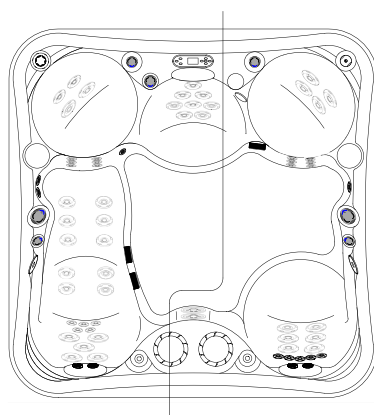
Upper- mid- lower-back, foot jets\*


**ZONE 1 B**

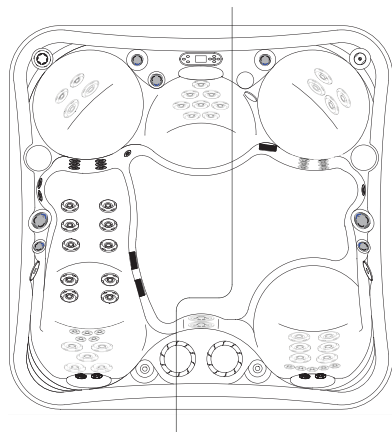
H.O.T. Zone lumbar lounge\*


**ZONE 2 B**

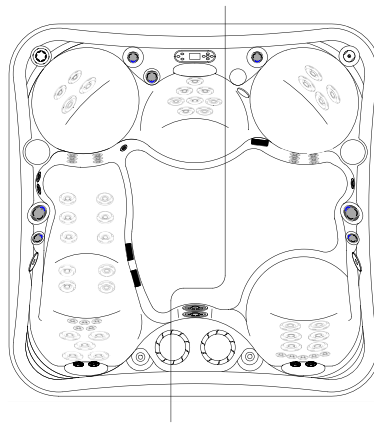
H.O.T. Zone shoulder\*


**ZONE 1 C**

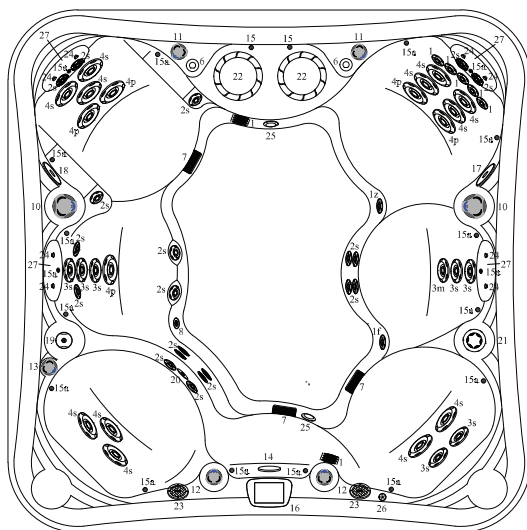
Lounge leg and foot jets\*


**ZONE 2 C**

Geyser Jets\*



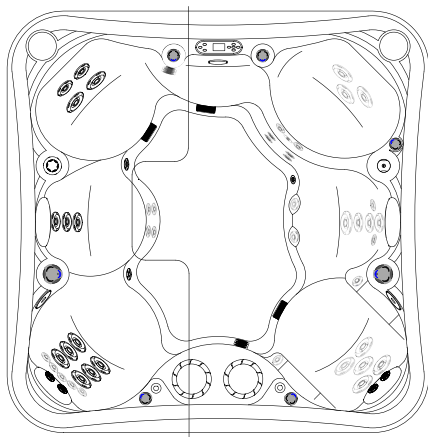




#	Component Identification	Qty.
1	HK™40 Jets	13
1f	In-line fitting	1
1z	Ozone fitting	1
2s	HK™8 Jets Straight	20
3s	HK™12 Jets Straight	7
3m	HK™12 Jets Multi-port	1
4s	HK™16 Jets Straight	12
4p	HK™16 Jets Spin	5
6	Waterfall Features	2
7	Suction Fittings	3
8	Floor Drain	1
10	Tri-Zone Controls	2
11	Neck Jet Valves	2
12	Air Controls	2
13	Waterfall Valve	1
14	Light	1
15	Constellation™ Lighting (option)	20
16	SpaTouch2 Control Panel	1
17	Pump 1 control	1
18	Pump 2 Control	1
19	Aroma Infusions (optional)	1
20	Aroma Injector (optional)	1
21	In-Line Dispenser	1
22	Filter Canisters	2
23	Speakers (optional)	2
24	Headrest Buttons	8
25	MicroSilk® Return Fittings (optional)	2
26	MicroSilk® Air Intake Fitting (optional)	1
27	Headrests	4
Physical Specifications		US/CAN INTL
Dimensions		90" x 90" 229 x 229 cm
Height		35" 89 cm
Corner Radius		12" 30 cm
Seating Capacity/Positions		7/7 7/7
Weight Dry		825 lbs 374 kg
Weight Full		4161 lbs 1887 kg
Water Capacity		400 gal 1514 l
Total Therapy Jets		58 58

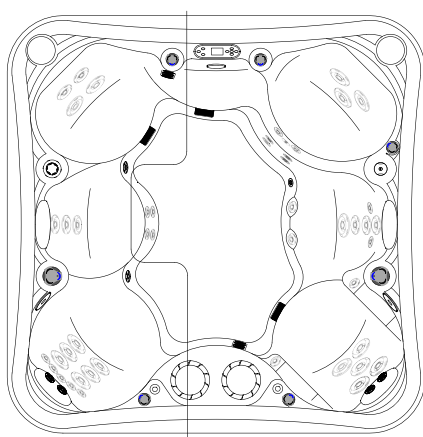
**ZONE 1A**

Mid- and lower-back jets



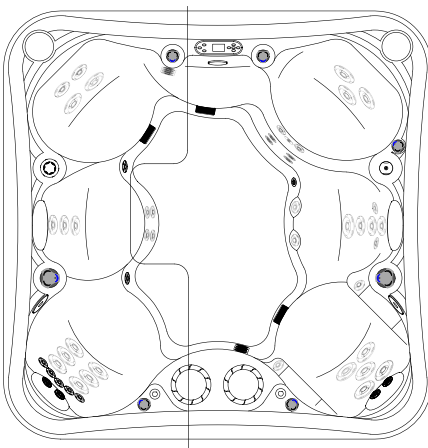
**ZONE 1C**

Whirlpool jets



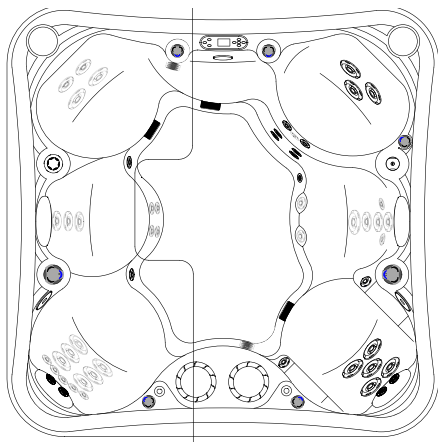
**ZONE 1B**

Upper-back jets



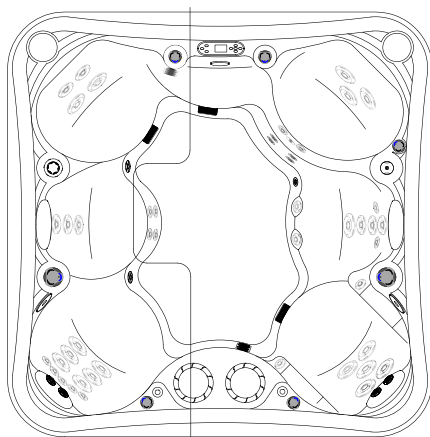
**ZONE 2A**

Leg, wrist, upper- and mid-back jets



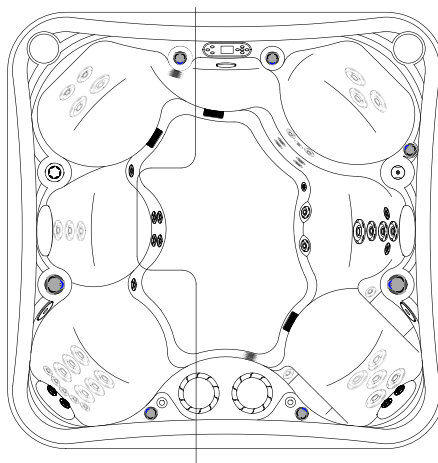
**ZONE 2C**

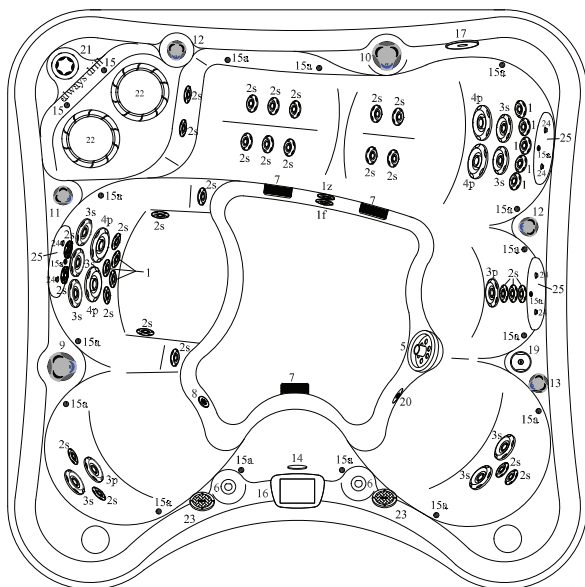
Whirlpool jets



**ZONE 2B**

Leg, upper-, mid-, lower-back jets

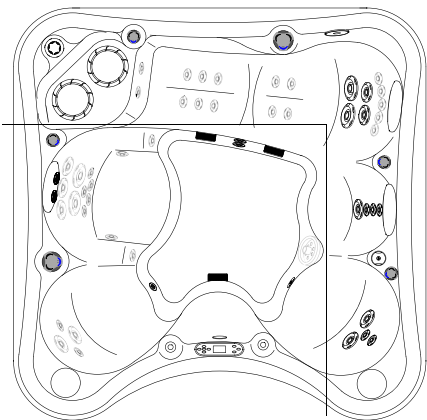




#	Component Identification	Qty.
1	HK™40 Jets	8
1f	In-line Fitting	1
1z	Ozone Fitting	1
2s	HK™8 Jets Straight	27
3s	HK™12 Jets Straight	8
3p	HK™12 Jets Spin	2
4p	HK™16 Jets Spin	4
5	Geyser Jet	1
6	Waterfall Features	2
7	Suction Fittings	3
8	Floor Drain	1
9	2-Way Jet Selector	1
10	Tri-Zone Controls	1
11	Neck Jet Valves	1
12	Air Controls	2
13	Waterfall Valve	1
14	Light	1
15	Constellation™ Lighting (option)	19
16	SpaTouch2 Control Panel	1
17	Pump 1 Control	1
19	Aroma Infusions (optional)	1
20	Aroma Injector (optional)	1
21	In-Line Dispenser	1
22	Filter Canisters	2
23	Speakers (optional)	2
24	Headrest Buttons	6
25	Headrests	3
Physical Specifications		US/CAN INTL
Dimensions		84" x 84" 213 x 213 cm
Height		35" 89 cm
Corner Radius		12" 30 cm
Seating Capacity/Positions		5/5 5/5
Weight Dry		785 lbs 356 kg
Weight Full		3621 lbs 1642 kg
Water Capacity		340 gal 1287 l
Total Therapy Jets		50 50

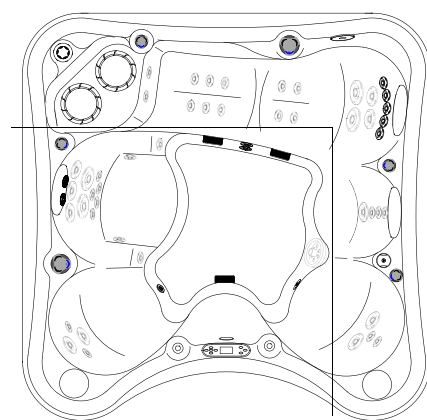
**ZONE 1A**

Lounge leg and foot jets



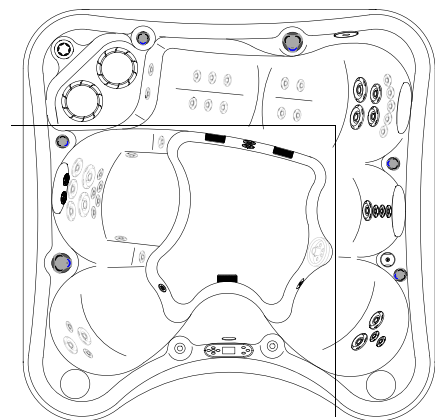
**ZONE 1C**

Lounge upper-back jets



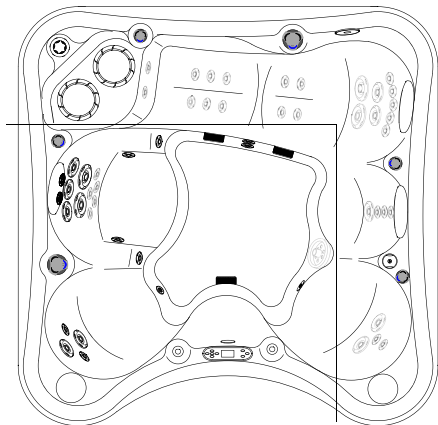
**ZONE 1B**

Upper-, mid-, and lower-back jets

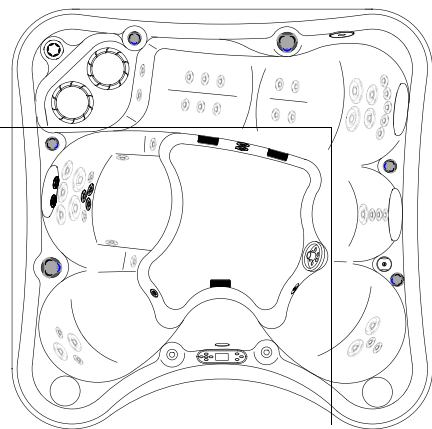


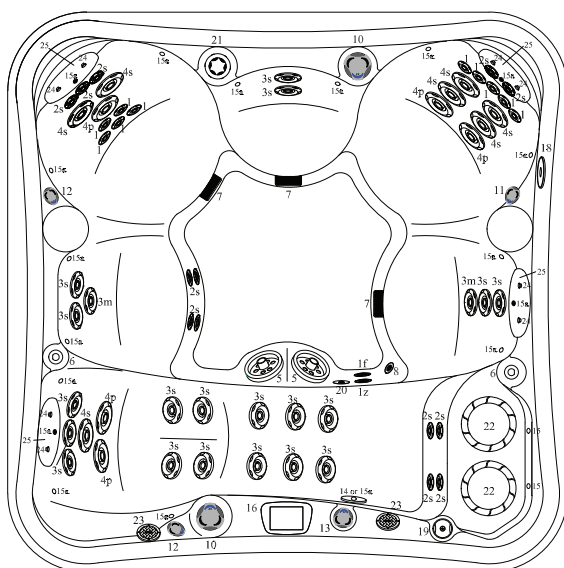
**ZONE 2 (JETS 1)**

Upper- and mid-back jets

**ZONE 2 (JETS 2)**

Lower-back and Geyser jets

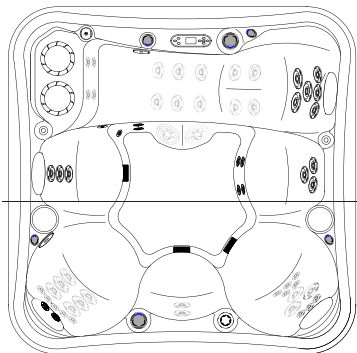




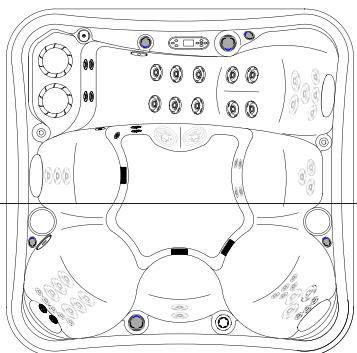
#	Component Identification	Qty.
1	HK™40 Jets	12
1f	In-line Fitting	1
1z	Ozone Fitting	1
2s	HK™8 Jets Straight	13
3s	HK™12 Jets Straight	19
3m	HK™12 Jets Multi-port	2
4s	HK™16 Jets Straight	7
4p	HK™16 Jets Spin	5
5	Geyser Jets	2
6	Waterfall Features	2
7	Suction Fittings	3
8	Floor Drain	1
10	Tri-Zone Controls	2
11	Neck Jet Valves	1
12	Air Controls	2
13	Waterfall Valve	1
14	Light	1
15	Constellation™ Lighting (option)	20
16	SpaTouch2 Control Panel	1
18	Pump 2 Control	1
19	Aroma Infusions (optional)	1
20	Aroma Injector (optional)	1
21	In-Line Dispenser	1
22	Filter Canisters	2
23	Speakers (optional)	2
24	Headrest Buttons	8
25	Headrests	4
Physical Specifications		
Dimensions	85.5" x 85.5"	217 x 217 cm
Height	35"	89 cm
Corner Radius	12"	30 cm
Seating Capacity/Positions	6/6	6/6
Weight Dry	795 lbs	361 kg
Weight Full	3659 lbs	1660 kg
Water Capacity	350 gal	1325 l
Total Therapy Jets	58	58



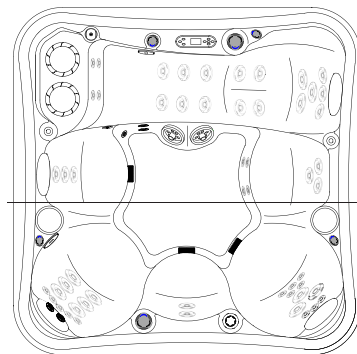
**ZONE 1A:** All back jets in lounge and side seats, plus footwell



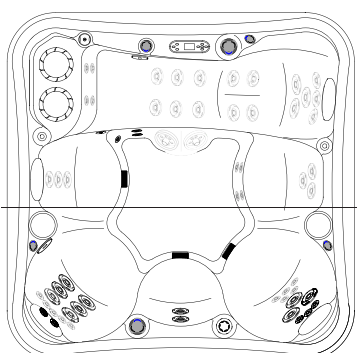
**ZONE 1B:** Lounge leg, foot jets



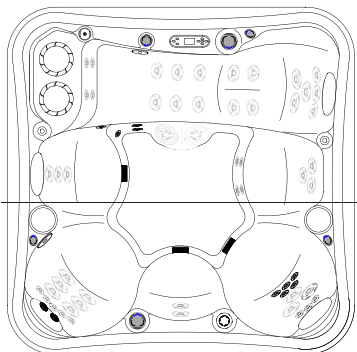
**ZONE 1C:** Dual geyser jets in footwell



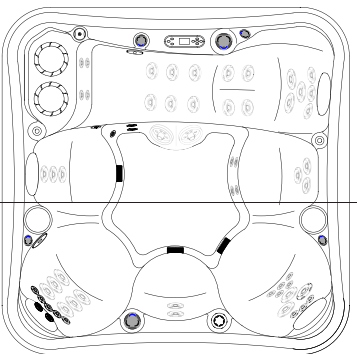
**ZONE 2A:** Back jets in therapy seats and side seat



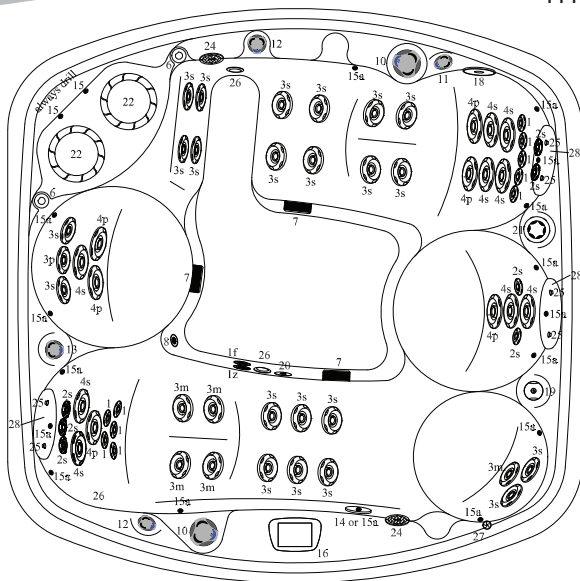
**ZONE 2B:** Lower back jets in therapy seat



**ZONE 2C:** Upper back jets in therapy seat





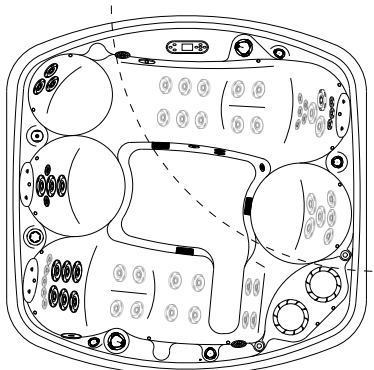


#	Component Identification	Qty.
1	HK™40 Jets	10
1f	In-line Fitting	1
1z	Ozone Fitting	1
2s	HK™8 Jets Straight	7
3s	HK™12 Jets Straight	22
3m	HK™12 Jets Multi-port	5
3p	HK™12 Jets Spin	1
4s	HK™16 Jets Straight	9
4p	HK™16 Jets Spin	6
6	Waterfall Features	2
7	Suction Fittings	3
8	Floor Drain	1
10	Tri-Zone Controls	2
11	Neck Jet Valves	1
12	Air Controls	2
13	Waterfall Valve	1
14	Light	1
15	Constellation™ Lighting (option)	18
16	SpaTouch2 Control Panel	1
18	Pump 2 control	1
19	Aroma Infusions (optional)	1
20	Aroma Injector (optional)	1
21	In-Line Dispenser	1
22	Filter Canisters	2
24	Speakers (optional)	2
25	Headrest Buttons	6
26	MicroSilk® Return Fittings (optional)	2
27	MicroSilk® Air Intake (optional)	1
28	Headrests	3
Physical Specifications		
Dimensions	85.5" x 85.5"	217 x 217 cm
Height	35"	89 cm
Corner Radius	12"	30 cm
Seating Capacity/Positions	5/5	5/5
Weight Dry	760 lbs	345 kg
Weight Full	3637 lbs	1650 kg
Water Capacity	345 gal	1306 l
Total Therapy Jets	60	60



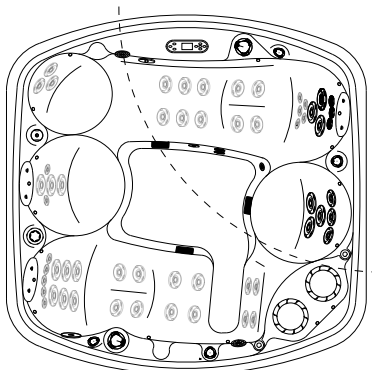
**ZONE 1A**

Upper-body jets.\*



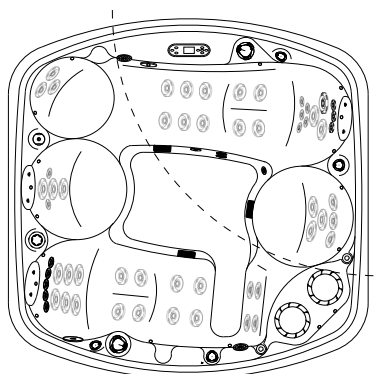
**ZONE 2A**

Upper-body jets.\*



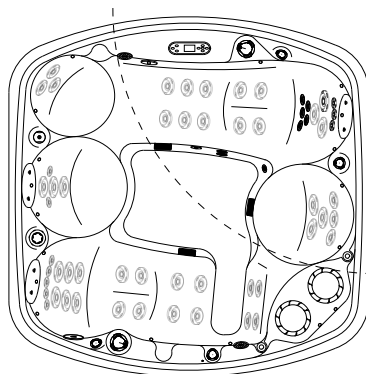
**ZONE 1B**

HOT Zone shoulder jets.\*



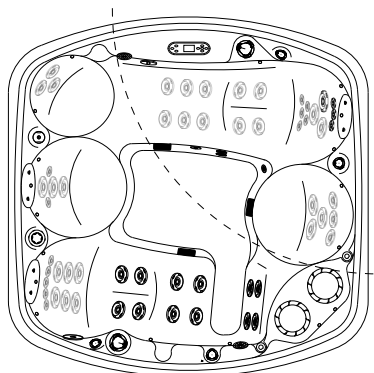
**ZONE 2B**

HOT Zone lumbar jets.\*



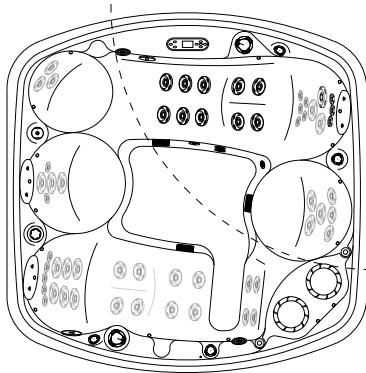
**ZONE 1C**

Leg and foot jets.\*

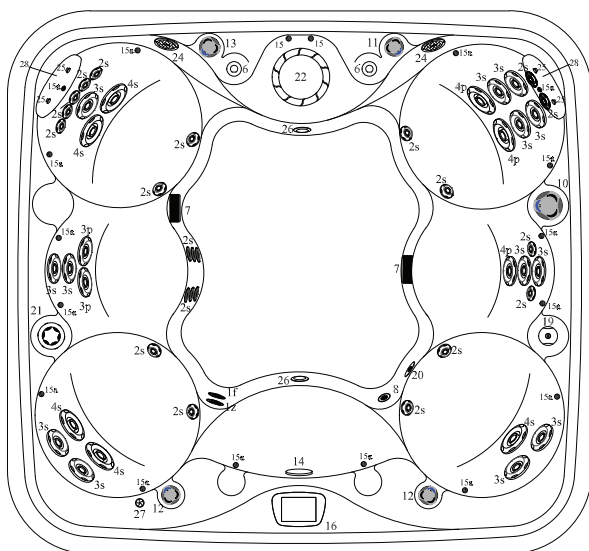


**ZONE 2C**

Leg and foot jets.\*



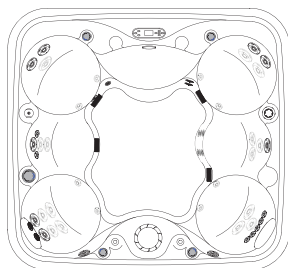
\*Neck jets operate in all zones.



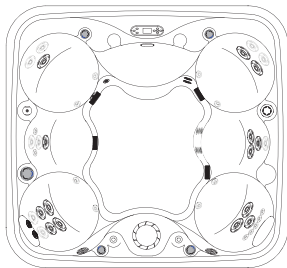
#	Component Identification	Qty.
1f	In-line Fitting	1
1z	Ozone Fitting	1
2s	HK™8 Jets Straight	23
3s	HK™12 Jets Straight	13
3p	HK™12 Jets Spin	2
4s	HK™16 Jets Straight	5
4p	HK™16 Jets Spin	3
6	Waterfall Features	2
7	Suction Fittings	2
8	Floor Drain	1
10	Tri-Zone Control	1
11	Neck Jet Valves	1
12	Air Controls	2
13	Waterfall Valve	1
14	Light	1
15	Constellation™ Lighting (option)	18
16	SpaTouch2 Control Panel	1
19	Aroma Infusions (optional)	1
20	Aroma Injector (optional)	1
21	In-Line Dispenser®	1
22	Filter Canister	1
24	Speakers (optional)	2
25	Headrest Buttons	4
26	MicroSilk® Return Fittings (optional)	2
27	MicroSilk® Air Intake Fitting (optional)	1
28	Headrests	2
Physical Specifications		US/CAN INTL
Dimensions	79" x 85.5"	201 x 217 cm
Height	35"	89 cm
Corner Radius	12"	30 cm
Seating Capacity/Positions	6/7	6/7
Weight Dry	590 lbs	268 kg
Weight Full	3342 lbs	1516 kg
Water Capacity	330 gal	1249 l
Total Therapy Jets	46	46

**PROMISE™ 1 PUMP THERAPY CONTROL****ZONE 1A**

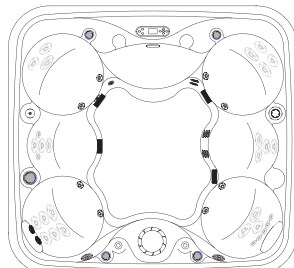
Upper-body jets.\*

**ZONE 1B**

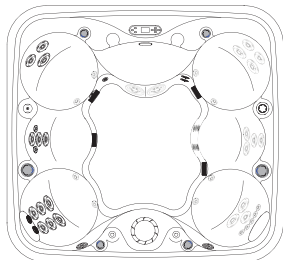
Mid-, lower-back jets.\*

**ZONE 1C**

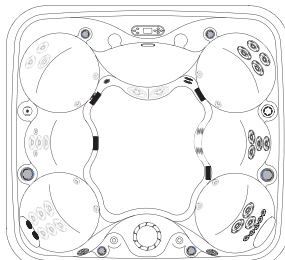
Leg and foot jets.\*

**PROMISE™ 2 PUMP THERAPY CONTROL****ZONE 1A**

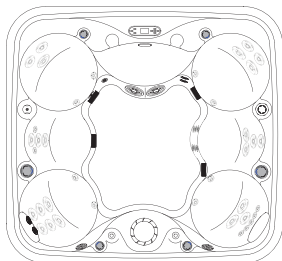
Upper-, mid- and lower-back jets.\*

**ZONE 2A**

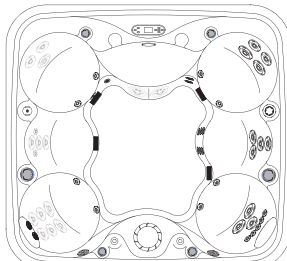
Upper-, mid- and lower-back jets.\*

**ZONE 1B**

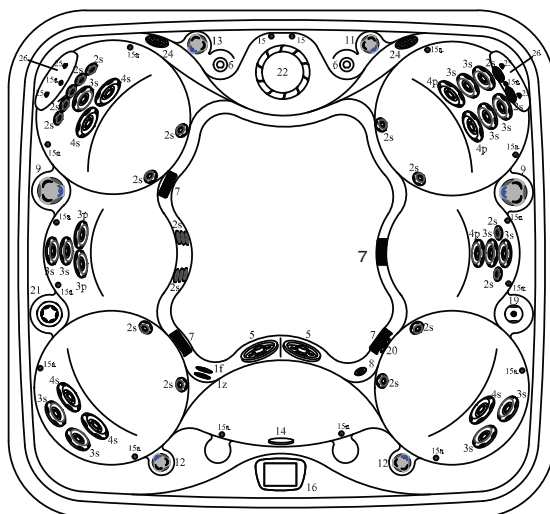
Geyser footwell jets.\*

**ZONE 2B**

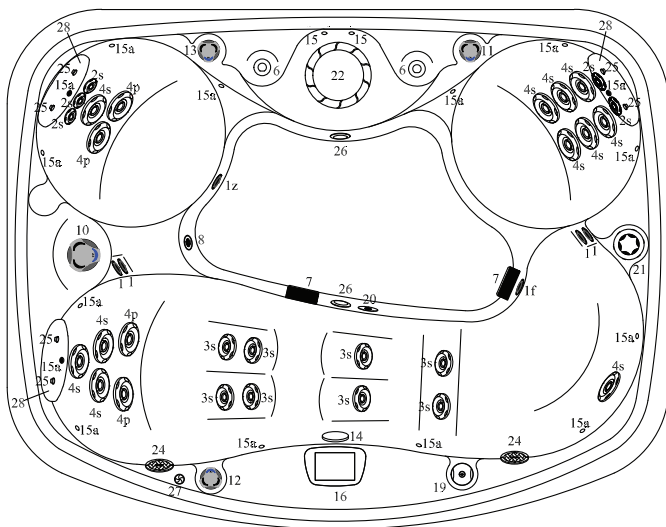
Leg and footwell jets.\*



\*Neck jets operate  
in all zones.



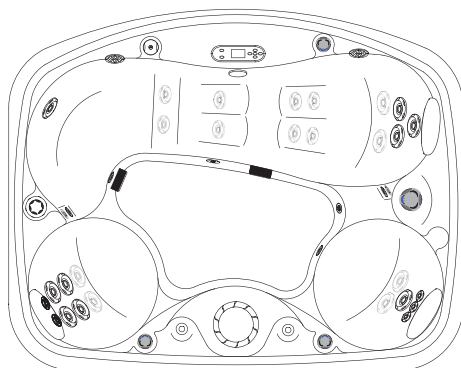
#	Component Identification	Qty.
1f	In-line Fitting	1
1z	Ozone Fitting	1
2s	HK™8 Jets Straight	23
3s	HK™12 Jets Straight	13
3p	HK™12 Jets Spin	2
4s	HK™16 Jets Straight	5
4p	HK™16 Jets Spin	3
5	Geyesr Jets	2
6	Waterfall Features	2
7	Suction Fittings	4
8	Floor Drain	1
9	2-way Jet Selector	2
11	Neck Jet Valves	1
12	Air Controls	2
13	Waterfall Valve	1
14	Light	1
15	Constellation™ Lighting (option)	18
16	SpaTouch2 Control Panel	1
19	Aroma Infusions (optional)	1
20	Aroma Injector (optional)	1
21	In-Line Dispenser®	1
22	Filter Canister	1
24	Speakers (optional)	2
25	Headrest Buttons	4
26	Headrests	2
Physical Specifications		US/CAN INTL
Dimensions	79" x 85.5"	201 x 217 cm
Height	35"	89 cm
Corner Radius	12"	30 cm
Seating Capacity/Positions	6/7	6/7
Weight Dry	630 lbs	286 kg
Weight Full	3382 lbs	1534 kg
Water Capacity	330 gal	1249 l
Total Therapy Jets	48	48



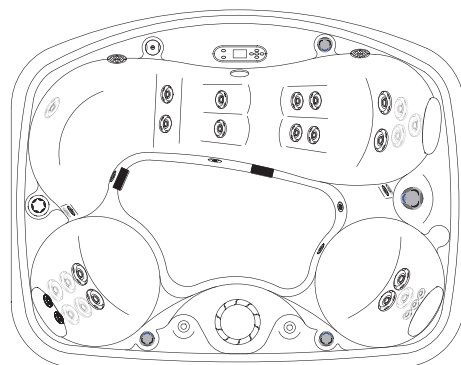
#	Component Identification	Qty.
1	HK™40 Jets	4
1f	In-line Fitting	1
1z	Ozone Fitting	1
2s	HK™8 Jets Straight	5
3s	HK™12 Jets Straight	8
4s	HK™16 Jets Straight	11
4p	HK™16 Jets Spin	4
6	Waterfall Features	2
7	Suction Fittings	2
8	Floor Drain	1
10	Tri-Zone Controls	1
11	Neck Jet Valves	1
12	Air Controls	1
13	Waterfall Valve	1
14	Light	1
15	Constellation™ Lighting (option)	17
16	SpaTouch2 Control Panel	1
19	Aroma Infusions (optional)	1
20	Aroma Injector (optional)	1
21	In-Line Dispenser®	1
22	Filter Canister	1
24	Speakers (optional)	2
25	Headrest Buttons	6
26	MicroSilk® Return Fittings (optional)	2
27	MicroSilk® Air Intake Fitting (optional)	1
28	Headrests	3
Physical Specifications		US/CAN INTL
Dimensions		84" x 66" 213 x 168 cm
Height		35" 89 cm
Corner Radius		12" 30 cm
Seating Capacity/Positions		2/3 2/3
Weight Dry		460 lbs 209 kg
Weight Full		2128 lbs 965 kg
Water Capacity		200 gal 757 l
Total Therapy Jets		32 32

**ZONE 1A**

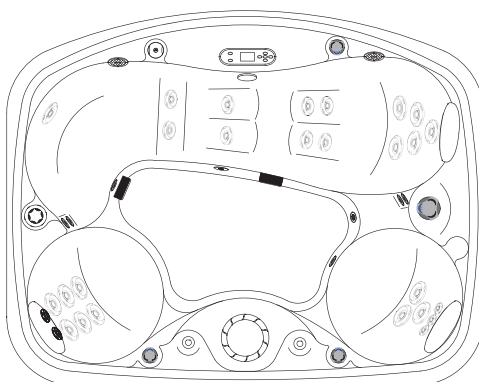
Upper- and mid-back jets.\*


**ZONE 1B**

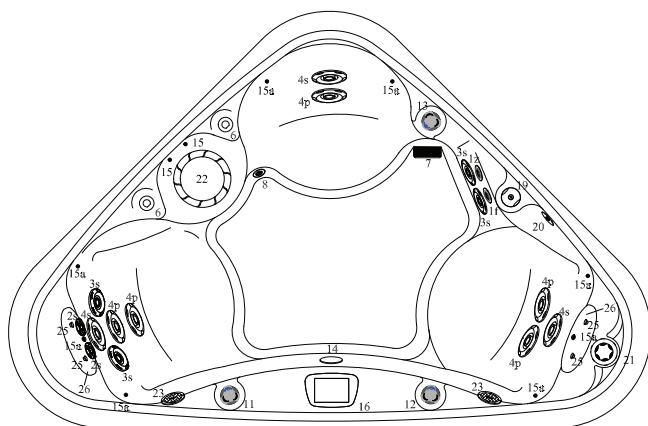
Lower-body and leg lounge jets.\*


**ZONE 1C**

Whirlpool jets.\*



\*Neck jets  
operate in  
all zones.



#	Component Identification	Qty.
1f	In-line Fitting	1
1z	Ozone Fitting	1
2s	HK™8 Jets Straight	2
3s	HK™12 Jets Straight	4
4s	HK™16 Jets Straight	3
4p	HK™16 Jets Spin	5
6	Waterfall Features	2
7	Suction Fittings	1
8	Floor Drain	1
11	Neck Jet Valves	1
12	Air Controls	1
13	Waterfall Valve	1
14	Light	1
15	Constellation™ Lighting (option)	10
16	SpaTouch2 Control Panel	1
19	Aroma Infusions (optional)	1
20	Aroma Injector (optional)	1
21	In-Line Dispenser	1
22	Filter Canisters	1
23	Speakers (optional)	2
25	Headrest Buttons	4
26	Headrests	2
Physical Specifications		
Dimensions	75" x 75"	191 x 191 cm
Height	29.5"	75 cm
Corner Radius	12"	30 cm
Seating Capacity/Positions	2/3	2/3
Weight Dry	300 lbs	136 kg
Weight Full	1545 lbs	701 kg
Water Capacity	170 gal	644 l
Total Therapy Jets	14	14



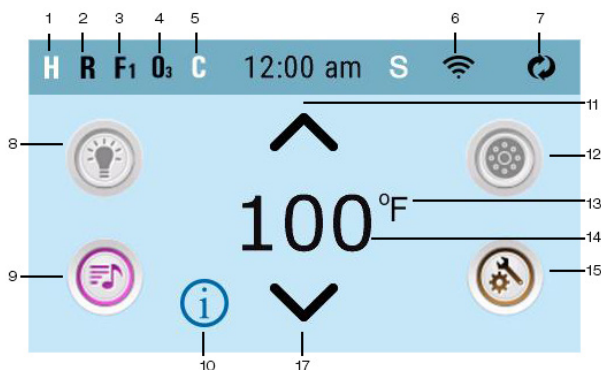


**SpaTouch2 Icon-Driven Control:** All models except Rendezvous Discovery

## THE MAIN SCREEN

### Spa Status

- Important information about spa operation can be seen on the Main Screen.
- Most features, including Set Temperature adjustment, may be accessed from this screen.
- The water temperature is displayed and the Set Temperature may be adjusted.
- Time-of-Day, Ozone and Filter status are available, along with other messages and alerts.
- The selected Temperature Range is indicated in the upper left corner.
- The Spa Equipment Control Icon will spin when a pump is in operation.



### ICON Specifications

1. H = High Temperature Range
2. R = Ready Mode
3. F1 = Filter Cycle 1 Running
4. O3 = Ozone Running
5. C = Cleanup Cycle
6. Wi-Fi Signal Indicator
7. Flip Screen
8. Light Icon = Turns On/Off
9. Music Icon = Press To Enter Music Screen
10. Message Waiting Indicator
11. Set Temperature Up
12. Spa Equipment Control Icon
13. Temperature Scale (F/C)
14. Current Water Temperature
15. Settings Icon
16. Heat Indicator
17. Decrease Set Temperature

**Note:** After 30 minutes\* the display will automatically go into sleep mode, which turns the display off. This is normal operation. Touch anywhere on the screen to “wake” the panel up. \*The actual number of minutes can be customized.

## THE MAIN SCREEN - Continued

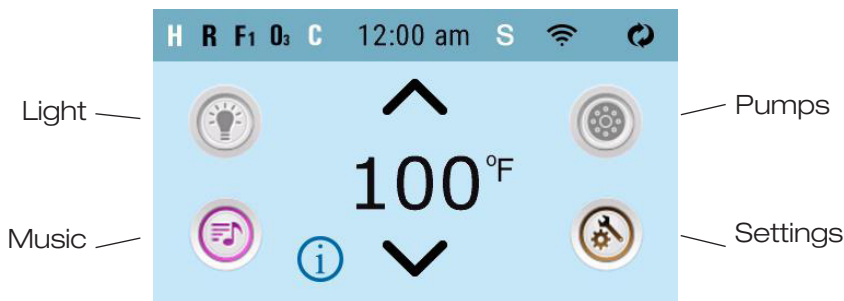
### Navigation

Navigating the entire menu structure is done by touching the screen.

The three screen selections indicated below can be selected. Pumps, settings and music\*: Touch one of these to enter a different screen with additional controls.

Most menu screens time out and revert to the main screen after 30 seconds of no activity.

\*Music button active only when equipped with Bluetooth Audio system option.

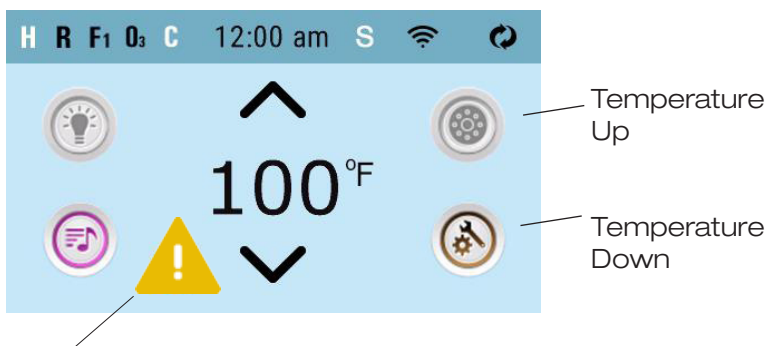


### Messages

At the bottom of the screen, at certain times an indicator may appear showing that a message is waiting. Touch this indicator to go to the Message Display Screen. On that Screen some of the messages can be dismissed.

A Warning Message is waiting

### Set Temperature



Press Up or Down once to display the Set Temperature (indicated by a flashing °F or °C, plus a change in color of the temperature).

Press Up or Down again to modify the Set Temperature. The Set Temperature changes immediately.

### Press-and-Hold

If Up or Down is pressed and held, the temperature will continue to change until you stop pressing, or until the Temperature Range limits are reached.

## THE SPA SCREEN

### All Equipment Access

The Spa Screen shows all available equipment\* to control. The display shows icons that are related to the equipment installed on a particular spa model, so this screen may change depending on the installation.

The icon buttons are used to select and control individual devices.

Some devices, like pumps, may have more than one ON state, so the icon will change to reflect the state of the equipment. Below are some examples of 2-speed Pump indicators. Touching the button will turn functions ON and OFF.

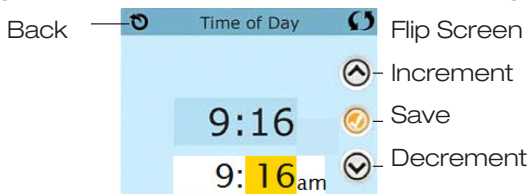


\*One exception: The Main Spa Light is not shown on the Spa Screen; it is only shown (and controlled) on the Main Screen.

## COMMON BUTTONS

### Values Increment/Decrement

If an Up or Down button is shown and pressed when on an editing page, and a value has been selected (highlighted), the value can be incremented by pressing the up arrow or decremented by pressing the down arrow.



Selected Value



### Flip Screen

Will appear on upper right on all screens. Pressing this icon will flip the screen 180 degrees.

### Exiting Screens

Use the Back button to go back or exit. The Back button is on every screen except the Main Screen, the Priming Mode Screen or the Message Display Screen.

When you see only the Back button, or this button plus an Inactive Save Button, it means Back or Exit. It appears on editing screens before you have changed any value, as well as on all other screens.

When you see both the Back button and an Active Save button, the Save button will Save, while the Back button will Cancel.

If the screen times out due to no activity it will act like Cancel.

## COMMON BUTTONS - Continued

### Page Right/Left

If there is a right arrow at the bottom of the screen, it takes you to the next page.

If there is a left arrow at the bottom of the screen, it takes you to the previous page.

### Page Up/Down

If an Up or Down button is shown and pressed when on a page with a text list, the list can be scrolled a page at a time.

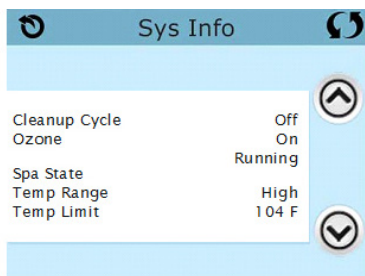
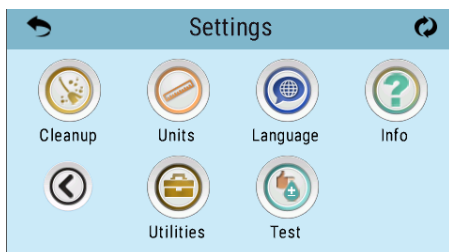
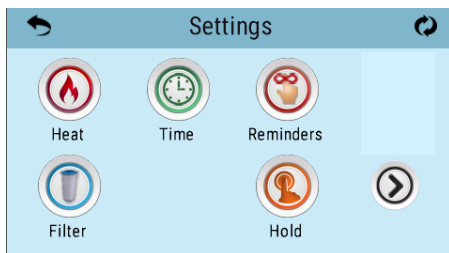
## THE SETTINGS SCREEN

### Programming, Etc.

The Settings Screen is where all programming and other spa behaviors are controlled.

Each icon on the Settings Screen takes you to a different screen, where one or more settings may be viewed and/or edited.

The Heat Icon takes you to a screen where you control the Heat Mode.

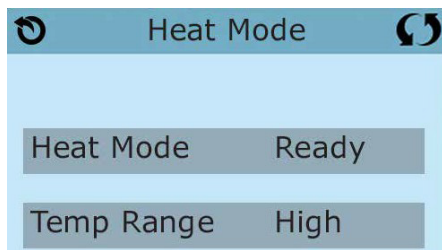
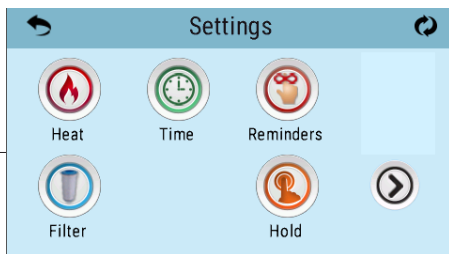


## THE SETTINGS SCREEN

### Heat Mode - Ready vs. Rest

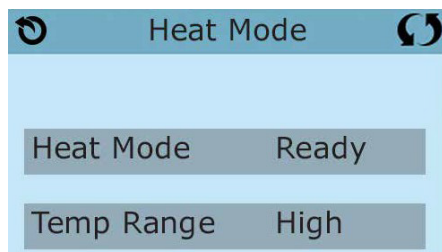
In order for the spa to heat, a pump needs to circulate water through the heater. The pump that performs this function is known as the "heater pump."

The heater pump is a 2-Speed Pump 1, Ready Mode and will circulate water every 1/2 hour, using Pump 1 in Low, to maintain a constant water temperature, heat as needed, and refresh the temperature display. This is known as "polling."



Rest Mode will only allow heating during programmed filter cycles. Since polling does not occur, the temperature display may not show a current temperature until the heater pump has been running for a minute or two.

When the heater pump has come on automatically (for example for heating) you can switch between low speed and high speed but you cannot turn the heater pump off.



### **Circulation Mode** (See Pumps, for other circulation modes)

If the spa is configured for 24HR circulation, the heater pump generally runs continuously. Since the heater pump is always running, the spa will maintain set temperature and heat as needed in Ready Mode, without polling.

In Rest Mode, the spa will only heat to set temperature during programmed filter times, even though the water is being filtered constantly when in 24HR circulation mode.

### **Ready-in-Rest Mode**

Ready-in-Rest Mode appears in the display if the spa is in Rest Mode and the Jets 1 Button is pressed. When the heater pump has come on automatically (for example for heating) you can switch between low speed and high speed but you cannot turn the heater pump off. After 1 hour, the System will revert to Rest Mode. This mode can also be reset by selecting the Heat Mode line on the Screen shown here.

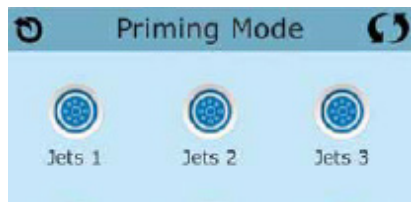
## **FILL IT UP!**

### **Preparation and Filling**

Fill the spa to its correct operating level, 2/3 up the skimmer. Be sure to open all valves and jets in the plumbing system before filling to allow as much air as possible to escape from the plumbing and the control system during the filling process. After turning the power on at the main power panel, the top-side panel will display a splash screen or startup screen.

### **Priming Mode – M019\***

After the initial start-up sequence, the control will enter Priming Mode and display a Priming Mode screen. Only pump icons appear on the priming mode screen. During the priming mode, the heater is disabled to allow the priming process to be completed without the possibility of energizing the heater under low-flow or no-flow conditions. Nothing comes on automatically, but the pump(s) can be energized by selecting the “Jet” buttons.





You can manually exit Priming Mode by pressing the “Back” button on the Priming Mode Screen. As soon as the Priming Mode screen appears on the panel, select the Jets 1 button once to start Pump 1 in low-speed and then again to switch to high-speed. Also, select the other pumps, to turn them on. The pumps should be running in high-speed to facilitate priming. If the pumps have not primed after 2 minutes, and water is not flowing from the jets in the spa, do not allow the pumps to continue to run. Turn off the pumps and repeat the process. Note: Turning the power off and back on again will initiate a new pump priming session. Sometimes momentarily turning the pump off and on will help it to prime. Do not do this more than 5 times. If the pump(s) will not prime, shut off the power to the spa and call for service.

**Important:** A pump should not be allowed to run without priming for more than 2 minutes. Under NO circumstances should a pump be allowed to run without priming beyond the end of the 4-5 minute priming mode. Doing so may cause damage to the pump and cause the system to energize the heater and go into an overheat condition.

### Exiting Priming Mode

The system will automatically enter the normal heating and filtering at the end of the priming mode, which lasts 4-5 minutes.

Note that if you do not manually exit the priming mode as described above, the priming mode will be automatically terminated after 4-5 minutes. Be sure that the pump(s) have been primed by this time: when water flows from the jets and all air is purged from the system.

Once the system has exited Priming Mode, the top-side panel will display the Main Screen, but the display will show the water temperature yet, as shown below. This is because the system requires approximately 1 minute of water flowing through the heater to determine the water temperature and display it.

----°F ----°C

\*M0XX is a Message Code. See Fault Log.

## SPA BEHAVIOR

---

### Pumps

On the Spa Screen, select a “Jets” button once to turn the pump on or off, and to shift between low- and high-speeds if equipped. If left running, the pump will turn off after a time-out period of 15 minutes on high speed then transition to 5 minutes on low before turning off. You may manually turn the pump back on.

The low-speed of pump 1 runs when any other pump is on. If the spa is in Ready Mode, Pump 1 low may also activate for at least 1 minute every 30 minutes to detect the spa temperature (polling) and then to heat to the set temperature if needed. When the low-speed turns on automatically, it cannot be deactivated from the panel, however the high-speed may be started.



## Filtration and Ozone

When Pump 1 is on low speed the ozone generator will run during filtration.

### Filter Cycles:

- Filter cycle 1 is set at the factory to run for 1 hour one time per day.
- Filter cycle 2 is set at the factory to run for 1 hour one time per day.
- At the start of each filter cycle, pumps will run briefly to purge the plumbing to maintain good water quality.
- Adjusting the time of the filtration cycle(s) is a matter of personal preference and usage patterns. Setting the filtration cycles for late at night can avoid higher electrical rate costs as an example. If you live in a climate that is seasonally hot, running the filtration cycle at night can avoid unwanted heat build-up from the pumps and prolong the life of the equipment. If your usage patterns are heavy and you would like additional filtration to occur, you have the choice of extending the filtration time or changing the second cycle to a different part of the day.

## Freeze Protection

If the temperature sensors within the heater detect a low enough temperature, the water devices automatically activate to provide freeze protection. The water devices will run either continuously or periodically depending on conditions.

In colder climates, an optional freeze sensor may be added to protect against freeze conditions that may not be sensed by the standard sensors. Auxiliary freeze sensor protection acts similarly except the temperature thresholds are determined by the switch. See your dealer for details.

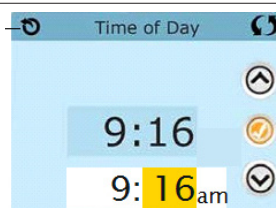
## Clean-up Cycle

When a pump is turned on by a button press, a clean-up cycle begins 30 minutes after the pump is turned off or times out. The pump and the ozone generator will run for 30 minutes or more, depending on the system. On some systems, you can change this setting. (See the Cleanup Cycle.)

## TIME-OF-DAY

### Be sure to set the Time-of-Day

- Setting the Time-of-Day is important for determining filtration times and other background features.
- Settings Screen takes you to a screen where you control the Time-of-Day.
- On the Time-of-Day screen, simply select the Hours and Minutes. Use the Up and Down Buttons to make changes, then Save.
- If no Time-of-Day is set in the memory an Information Screen will appear. If you exit it an Information Icon will appear at the bottom of the Main Screen, until the Time-of-Day has been set.



**Note:** If power is interrupted to the system, Time-of-Day will be maintained for several days.

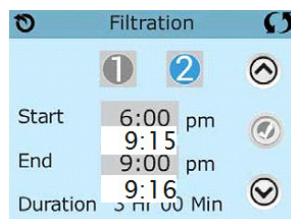


## ADJUSTING FILTRATION

### Main Filtration

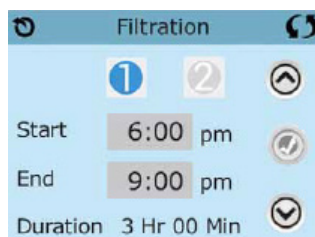
Using the same adjustment as Setting the Time, Filter Cycles are set using a start time and a duration. Each setting can be adjusted in 15-minute increments. The panel calculates the end time and displays it automatically.

The Filter Icon on the Settings Screen takes you to a screen where you control the Filter Cycles.



### Filter Cycle 2

Viewing Filter 1 while Filter 2 is OFF:  
while Filter 2 is ON:



Viewing Filter 1



- Press “1” to view Filter 1. Press “2” once to view Filter 2. Press “2” again to turn Filter 2 ON or OFF.
- When Filter Cycle 2 is ON, it can be adjusted in the same manner as Filter Cycle 1.
- It is possible to overlap Filter Cycle 1 and Filter Cycle 2, which will shorten overall filtration by the overlap amount.

## ADDITIONAL SETTINGS

### Purge Cycles

In order to maintain sanitary conditions, as well as protect against freezing, secondary water devices will purge water from their respective plumbing by running briefly at the beginning of each filter cycle. (Some systems will run a certain number of purge cycles per day, independent of the number of filter cycles per day. In this case, the purge cycles may not coincide with the start of the filter cycle.)

If the Filter Cycle 1 duration is set for 24 hours, enabling Filter Cycle 2 will initiate a purge when Filter Cycle 2 is programmed to begin.

### The Meaning of Filter Cycles

1. The heat pump always runs during the filter cycle\*
2. In Rest Mode, heating only occurs during the filter cycle
3. Purges happen at the start of each filter cycle



## AUXILIARY PANEL

### Specific Buttons for Specific Devices

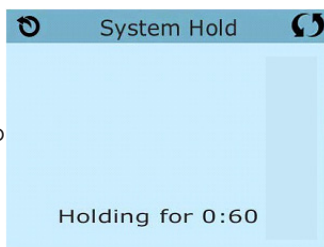
If the spa has an Auxiliary Panel installed, pressing buttons on that panel will activate the device indicated for that button.

These dedicated buttons will operate just like the Spa Screen buttons and the equipment will behave in the same manner with each button press.

### Hold - M037\*

Hold Mode is used to disable the pumps during service functions like cleaning or replacing the filter. Hold Mode will last for 1 hour unless the mode is exited manually. If spa service will require more than an hour, it may be best to simply shut down power to the spa.

The Hold Icon on the Settings Screen places the spa in Hold Mode and displays the System Hold screen. Touch Back to exit Hold Mode.

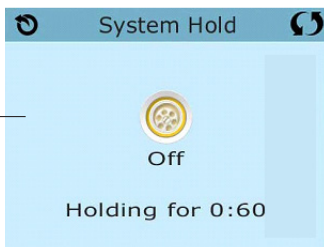


### Drain Mode

Some spas have a special feature that allows Pump 1 to be employed when draining the water. When available, this feature is a component of Hold Mode.

Touch this Icon to turn the Drain Pump ON or OFF. —

\*M0XX is a Message Code. Codes like this will be seen in the Fault Log.



## THE UTILITIES SCREEN

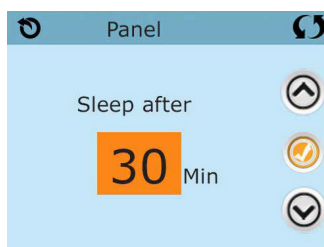
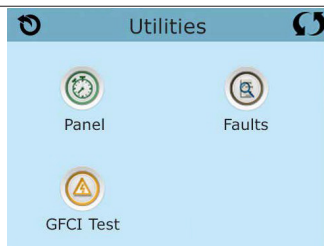
### Utilities

The Utilities Icon on the Settings Screen takes you to the Utilities Screen.

The Utilities Screen contains the following:

### Panel

Touching the Panel Icon on the Utilities Screen takes you to the Panel Screen, where you can set how long it takes the panel to go to sleep after the last activity. The Sleep Timer can be set from 1 minute to 60 minutes. The default is 30 minutes.



## Fault Log

The Fault Log is a record of the last 24 faults that can be reviewed by a service tech.

Use the Up and Down buttons to view each of the Faults.

When Priming Mode shows in the Fault Log, it is not a fault. Rather, it is used to keep track of spa restarts.

## GFCI Test

(Feature not available on CE rated systems.)

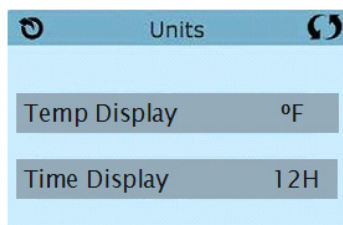
Your system may have GFCI configured in one of three ways:

1. GFCI test is not enabled
2. Manual GFCI test is enabled but automatic GFCI test is not enabled
3. Both manual and automatic GFCI tests are enabled. The automatic test will happen within 7 days of the spa being installed and if successful will not repeat. (If the automatic test fails it will repeat after the spa is restarted.)

GFCI Test will not appear on the screen if it is not enabled. This screen allows the GFCI to be tested manually from the panel and can be used to reset the automatic test feature.

## Units Screen

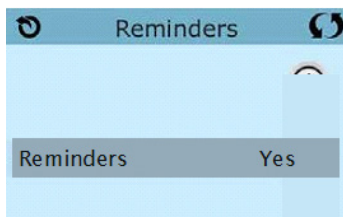
- The Units Icon on the Settings Screen takes you to the Units Screen.
- Press Temp Display to change the temperature between Fahrenheit and Celsius.
- Press Time Display to change the clock between 12 hr and 24 hr display.



## Reminders

The Reminder Icon on the Settings Screen takes you to the Reminders Screen.

Press Reminders to turn the reminder messages (like Clean Filter) ON (Yes) or OFF (No).



## Cleanup Cycle

Cleanup Cycle Duration is not always enabled, so it may not appear. When it is available, set the length of time Pump 1 will run after each use. 0-4 hours are available. Setting it to 0.0 Hr keeps the Cleanup Cycles from running.

The Cleanup Icon on the Settings Screen takes you to the Cleanup Cycle screen.



## Language

The Language Icon on the Settings Screen takes you to the Language screen.

Change the language displayed on the panel.





### **Wi-Fi control: (if equipped)**

Your hot tub is configured with a special component that will allow wireless control with most Android and Apple® based products such the Ipod Touch®, Ipad® and Iphone®. This is an exciting feature that allows wireless operation of the spa functions and most settings.

Please note that the typical operating range is within 30 feet of the hot tub depending on obstructions or location/orientation. The signal may not be strong enough in some cases to adequately establish and hold communication between the hot tub and your device especially when operating from indoors and the signal has to travel through walls. Keep this in mind when placing your hot tub during installation in an effort to keep any obstructions to a minimum.

### **Initial set up:**

1. In order to communicate and operate the hot tub, you will need to go to the App Store and download the free “Marquis Spas & Hot Tubs” app to your device.
2. Go to the settings section on your device and choose the “Wi-Fi” tab. Be sure that the Wi-Fi selection slider is set to the “On” position so your device will discover all available Wi-Fi choices. Choose the tab labeled BWG followed by a series of numbers. Be sure your device connects which should be shown by the presence of a check mark next to the name.
3. Return to the main screen and open the Marquis App and proceed to “connect” with the hot tub. Stopping the connection process and restarting may be required. There is nothing wrong with the unit as this can be caused by protocols issued by Apple® Inc.
4. Once connected you will be able to operate the jets and light on the control tab of the App. Moving to the settings tab will allow changing the time, temperature and filtration settings of the hot tub.

**Note:** If your device goes to sleep, screen darkens, or is turned off you will need to reconnect again with the hot tub in order to reestablish control.

### **WIRELESS NETWORK SPA CONTROL SETUP INSTRUCTIONS**

The new Wi-Fi module expands the peer to peer only functionality of the previous version by incorporating network functionality and cloud control.

### **What you will need:**

1. Owners must get the new Balboa app named: Balboa Water Group – Wi-Fi spa control (the icon will be labeled “spa control”).
2. Make sure your devices Wi-Fi is turned on. Check with your device instructions on how to access your Wi-Fi settings.
3. Router/wireless access information (accessed from wireless access point settings):
  - a. Network security type (WEP, WPA or open)
  - b. SSID (network name - i.e. “home” or “bobs router” etc.)
  - c. Key (Wireless network passphrase, code or password)
4. Viable, stable Wi-Fi signal at the hot tub transceiver location. Stand by the spa and make sure that your phone can see the wireless access point you are trying to connect to. If your phone gets a viable signal the transceiver for the control should as well.
5. Key is the passphrase, password or passcode.
6. The Android version, while similar, will allow you to choose the network from a drop down menu.



7. There needs to be a wireless access point inside the home within range of the hot tub.
8. Connect to the wireless network you set up the transceiver on.
9. Open the spa control app. If you entered the network settings correctly in the previous step you should be able to control your spa.

### **Connect peer to peer:**

1. While standing next to your spa, go to settings/Wi-Fi on your phone. You should see the transceiver on the spa show up as BWGSpa\_XXXXX. The X will represent numbers. Select this connection.
2. Go back to the main screen on your phone and open the spa control app. This will allow you to connect peer to peer (phone/device to spa) to control the spa. Verify this works by adjusting jets, lights etc.

### **Connecting to the Home Network:**

1. While connected peer to peer, as above, go into settings. On the bottom click the button named "advanced".
2. Click "Wi-Fi settings" and enter the Wi-Fi settings as follows:
3. Choose the type of security (WEP, WPA or open). This is very important.
4. SSID is the name of the wireless connection, i.e. "home" or "bobs".

## **USE AND CARE OF AROMA INFUSIONS LIQUID FRAGRANCE DISPENSING SYSTEM**

### **Filling**

- Turn the top cap of the Aroma Infusions counterclockwise. Remove the pump mechanism to expose the reservoir.
- The reservoir will hold up to 8oz. of liquid aroma. Monitor the level during filling to avoid overfilling. Hold the liquid level approximately 1" below the top during filling to ensure the proper operating level.
- Once filled, replace the pump mechanism into the reservoir and turn the cap clockwise. DO NOT over tighten.

### **Use**

- To dispense aroma into the water, press the small dispensing button in the middle of the cap. When used for the first time, it will take approximately 7 to 8 depressions of the button to fill the line leading to the aroma discharge fitting in the spa. Once filled, each depression of the button will dispense aroma into the water.
- Only use manufacturer's recommended products.  
Simply press the dispensing button to reach the desired level of fragrance. The amount of fragrance you desire will be dependent on the number of times you press the button.
- Be aware that it will take a few moments for the fragrance to mix with the water and become apparent above the water level of the spa. Typically two to three depressions of the button will be satisfactory.
- The top button can be locked to avoid accidental use. To lock, simply turn the button clockwise ¼ turn. To unlock, turn counterclockwise ¼ turn.

### **Care**

- We recommend periodic cleaning of the reservoir and pump mechanism. This is easily done by removing the top cap and filling with fresh warm water

from the tap. After filling, reinstall the cap and depress the dispensing button until the water has been flushed out. This will empty all of the water from the reservoir and have it ready for refilling with liquid fragrance.

- When switching fragrances you may want to perform the cleaning function to remove any residual of the previous fragrance.
- Routine and periodic cleaning of the filter cartridges is recommended to maintain optimum filtration of the hot tub water. Heavy use or large quantities of dispensed fragrance will accelerate the need for cleaning the filter cartridges.

Your AromaFusion™ canister was developed specifically for use with hot tub liquid fragrances. Use of oils, fragrances and liquids that prove to be corrosive may void your warranty. If you are unsure of what you may use in the AromaFusion™ canister, please consult your local hot tub retailer for the the manufacturer's recommended products.

## **MICROSILK® OPERATING INSTRUCTIONS**

- Press "MicroSilk" on the touch screen panel.
  - a. The pump will start and you will notice the presence of the micro bubbles beginning to enter the water from two fittings in the footwell. Do not block these fittings during operation. Periodic bursts of air are normal and will not affect operation or effectiveness.
  - b. It can take up to 8 minutes depending on the size of model to completely fill the water with micro bubbles. You will notice the water will change from clear to milky in appearance.
  - c. If any of the other therapy pumps are on, they will be turned off automatically after pressing the start button and may take up to 30 seconds for pumps to turn off. This is necessary for the proper concentration of micro bubbles to be generated. The MicroSilk pump will run for 30 minutes and then automatically turn off. If continued operation is desired, pressing "MicroSilk" on the touch screen will restart the system for another 30 minutes.

**Please note:** Periods longer than 20 minutes in elevated temperature may be harmful to your health. Please refer to the safety instructions in the Owner's Manual.

- To manually turn the feature off, press "MicroSilk" one time.
- A clean-up cycle will automatically turn on the filtration pump for 30 minutes after using the feature.

## **Maintenance Considerations**

- Due to the nature of how MicroSilk® works to exfoliate the skin, you may notice higher levels of body oils than normal. This can also be increased if multiple bathers are using the feature at the same time or more frequently. As a result, setting the controls to perform longer filtration of clean-up cycles may be necessary. Please refer to the instructions in the Signature Series Owner's Manual to make a change to the duration of the filtration or clean-up cycle.

- It is recommended to clean the filter cartridge/s once per month to ensure they are free from debris and oils. Failure to do so may result in poor water quality or the ability to properly clean up the water after use.
- It may be necessary to increase the setting on the bromine cartridge located in the inline sanitation housing or increase the amount of other sanitizer you may be using. Checking the sanitizer regularly and adjusting as needed is very important to water safety.

**Please note:** The MicroSilk system is adjusted during the manufacturing process for optimal performance and should not need further adjustment, however, under certain conditions such as altitude, temperature and water condition at the customer location small adjustments may need to be made. To adjust the MicroSilk flow locate the valve with the blue handle on the suction side of the Microsilks pump. The valve may be located behind the access panel on the side of the unit. When adjusting the valve use small incremental turns and check performance. If the performance does not improve try turning the valve in the opposite direction until the desired performance is obtained.

## BLUETOOTH AUDIO

The built-in audio expansion port allows you to connect optional accessories.

**Rendezvous Discovery only:** Use of a MP3 player or USB memory stick are supported. **NOTE:** The 3.5 mm auxiliary jack is designed for input only from devices such as an MP3 player operating at 4.5V or less.

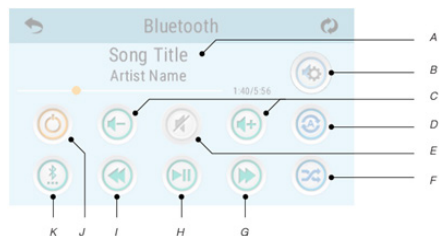
## Cloud:

1. The information and requirements for the Cloud connection are supplemental to the Home Network instructions.
2. Wireless access info must be entered and saved.
3. When connected to the cloud a small cloud will appear under "controls" on the top left side of the screen.
4. Outside of the customers network (via 3G, LTE or another wireless connection) the remote app, when active will connect to the spa via the cloud (Balboas servers). This is free for the first 12 months (activated upon the first successful cloud connection). Close to the end of the first 12 months the app will prompt the customer to continue for a small fee.

## Connection:

1. On the topside control press the music button. Next press the power button
2. Turn on the Bluetooth function of your smart device or music device.
3. On your Smart device or music device, click search for Bluetooth device. Make sure you are close enough to the spa.
4. Select "PPME70BT" from the pairing list.
5. Click "Connect." Once connected, you can now play your favorite music from your smart device or music device.

Note: Adagio operates up to 100 feet in open air. Ranges vary as they are dependent on installations.



A - Song, artist, length, elapsed time

B - Settings

C - Volume + -

D - Repeat

E - Mute on/off

F - Shuffle

G - Track forward

H - Play/pause

I - Track back

J - Power on/off

K - Input Modes: Bluetooth, USB, Line in

Some icons such as "Repeat" may not appear if music isn't playing.



## GENERAL MESSAGES

Most messages and alerts will appear at the bottom of the normally used screens.

Several alerts and messages may be displayed in a sequence.

---°F ---°C

### Water Temperature is Unknown

After the pump has been running for 1 minute, the temperature will be displayed.

### Possible freezing condition

- A potential freeze condition has been detected, or the Aux Freeze Switch has closed. All water devices are activated.
- In some cases, pumps may turn on and off and the heater may operate during Freeze Protection.
- This is an operational message, not an error indication.



### The water is too hot – M029\*

The system has detected a spa water temp of 110°F (43.3°C) or more, and spa functions are disabled. System will auto reset when the spa water temp is below 108°F (42.2°C). Check for extended pump operation or high ambient temp.

\*M0XX is a Message Code. Codes like this will be seen in the Fault Log.

## HEATER-RELATED MESSAGES

### The water flow is low – M016\*\*

There may not be enough water flow through the heater to carry the heat away from the heating element. Heater start up will begin again after about 1 min. See “Flow Related Checks” below.

### The water flow has failed\* – M017\*\*

There is not enough water flow through the heater to carry the heat away from the heating element and the heater has been disabled. See “Flow Related Checks” below. After the problem has been resolved, reset the message\*.

### The heater may be dry\* – M028\*\*

Possible dry heater, or not enough water in the heater to start it. The spa is shut down for 15 min. Reset this message\* to reset the heater start-up. See Flow Related Checks below.

### The heater is dry\* – M027\*\*

There is not enough water in the heater to start it. The spa is shut down. After the problem has been resolved, you must reset the message\* to restart heater. See Flow Related Checks below.





## SENSOR-RELATED MESSAGES

---

### Sensors are out of sync – M015\*\*

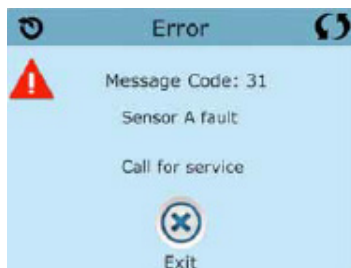
The temperature sensors MAY be out of sync by 2°F. Call for Service if this message does not disappear within a few minutes.

### Sensors are out of sync – Call for service\* – M026\*\*

The temperature sensors ARE out of sync. The fault above has been established for at least 1 hour. Call for Service.

### Sensor A Fault, Sensor B Fault – Sensor A: M031\*\*, Sensor B: M032\*\*

A temperature sensor or sensor circuit has failed. Call for Service.



## MISCELLANEOUS MESSAGES

---

### Communications error

The control panel is not receiving communication from the System. Call for Service.

### Test software installed

The Control System is operating with test software. Call for Service.

## SYSTEM-RELATED MESSAGES

---

### Program memory failure\* – M022\*\*

At Power-Up, the system has failed the Program Checksum Test. This indicates a problem with the firmware (operation program) and requires a service call.

### The settings have been reset (Persistent Memory Error)\* – M021\*\*

Contact your dealer or service organization if this message appears on more than one power-up.

### The clock has failed\* – M020\*\*

Contact your dealer or service organization.

### Configuration error (Spa will not Start Up)

Contact your dealer or service organization.

### The GFCI test failed (System Could Not Test the GFCI) – M036\*\*

(North America Only) May indicate an unsafe installation. Contact your dealer or service organization.

### A pump may be stuck on – M034\*\*

Water may be overheated. POWER DOWN THE SPA. DO NOT ENTER THE WATER. Contact your dealer or service organization.





### Hot fault - M035\*\*

A pump appears to have been stuck ON when spa was last powered. POWER DOWN THE SPA. DO NOT ENTER THE WATER. Contact your dealer or service organization.

#### \* **Some messages can be reset from the panel.**

Messages that can be reset will appear with a Clear Icon at the bottom of the Message Screen.

Press the Clear Icon text to reset the message.



\*\*MOXX is a Message Code. Codes like this will be seen in the Fault Log.



## Basic Installation and Configuration Guidelines

- Use minimum 6AWG copper conductors only.
- Torque field connections between 21 and 23 in lbs.
- Readily accessible disconnecting means to be provided at time of installation.
- Permanently connected power supply.
- Connect only to a circuit protected by a Class A Ground Fault Circuit Interrupter (GFCI) or Residual Current Device (RCD) mounted at least 5' (1.52M) from the inside walls of the spa/hot tub and in line of sight from the equipment compartment.
- CSA enclosure: Type 2
- Refer to Wiring Diagram inside the cover of the control enclosure.
- Refer to Installation and Safety Instructions provided by the spa manufacturer.

**Warning:** People with infectious diseases should not use a spa or hot tub.

**Warning:** To avoid injury, exercise care when entering or exiting the spa or hot tub.

**Warning:** Do not use a spa or hot tub immediately following strenuous exercise.

**Warning:** Prolonged immersion in a spa or hot tub may be injurious to your health.

**Warning:** Maintain water chemistry in accordance with the manufacturers instructions.

**Warning:** The equipment and controls shall be located not less than 1.5 meters horizontally from the spa or hot tub.

### Warning! GFCI or RCD Protection.

The Owner should test and reset the GFCI or RCD on a regular basis to verify its function.

### Warning! Shock Hazard! No User Serviceable Parts.

Do not attempt service of this control system. Contact your dealer or service organization for assistance. Follow all owner's manual power connection instructions. Installation must be performed by a licensed electrician and all grounding connections must be properly installed.

## CSA Compliance/Conformité

### Caution:

- Test the ground fault circuit interrupter before each use of the spa.
- Read the instruction manual.
- Adequate drainage must be provided if the equipment is to be installed in a pit.
- For use only within an enclosure rated CSA Enclosure 3.
- Connect only to a circuit protected by a Class A ground fault circuit interrupter or residual current device.
- To ensure continued protection against shock hazard, use only identical replacement parts when servicing.
- Install a suitably rated suction guard to match the maximum flow rate marked.

### Warning:

- Water temperature in excess of 100.4°F or 38°C may be injurious to your health.
- Disconnect the electrical power before servicing.

### Attention:

- Toujours vérifier l'efficacité du disjoncteur différentiel avant d'utiliser différentiel avant d'utiliser le bain.
- Lire la notice technique.
- Lorsque l'appareillage est installé dans une fosse, on doit assurer un drainage adéquat.
- Employer uniquement à l'intérieur d'une clôture CSA Enclosure 3.
- Connecter uniquement à un circuit protégé par un disjoncteur différentiel de Class A.
- Afin d'assurer une protection permanente contre le danger de choc électrique, lors de l'entretien employer seulement des pièces de rechange identiques.
- Les prises d'aspiration doivent être équipées de grilles convenant au débit maximal indiqué.

### Avertissement:

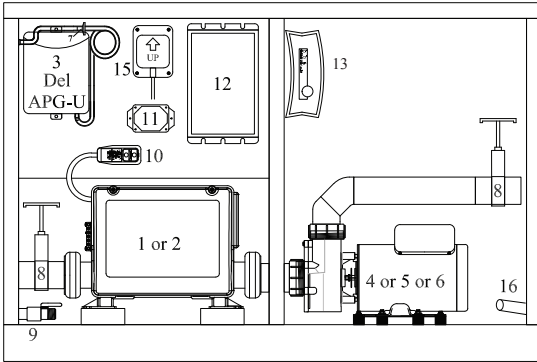
- Des températures de l'eau supérieures à 38°C peuvent présenter un danger pour la santé.
- Déconnecter du circuit d'alimentation électrique avant l'entretien.

### Warning/Avvertimento:

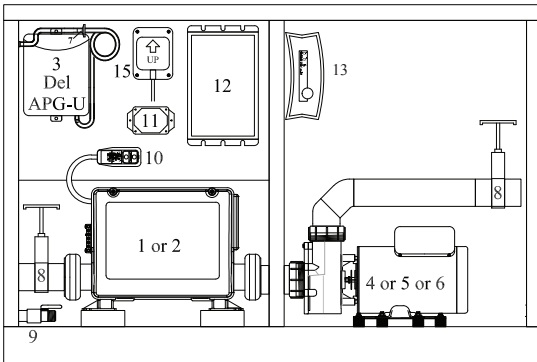
- Disconnect the electric power before servicing. Keep access door closed.
- Déconnecter du circuit d'alimentation électrique avant l'entretien.
- Garder la porte fermée.



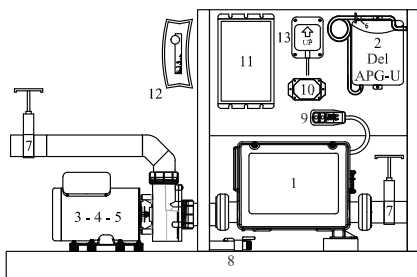
### RENDEZVOUS



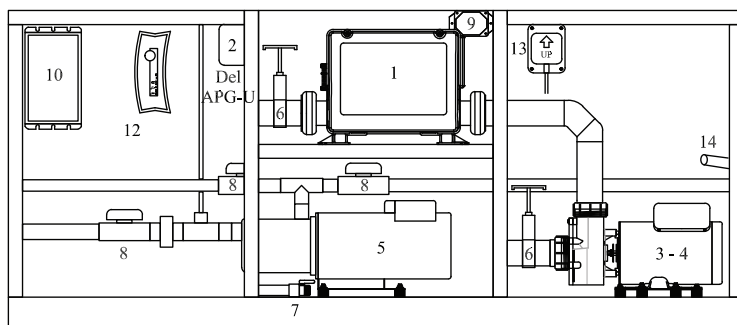
### RENDEZVOUS DISCOVERY



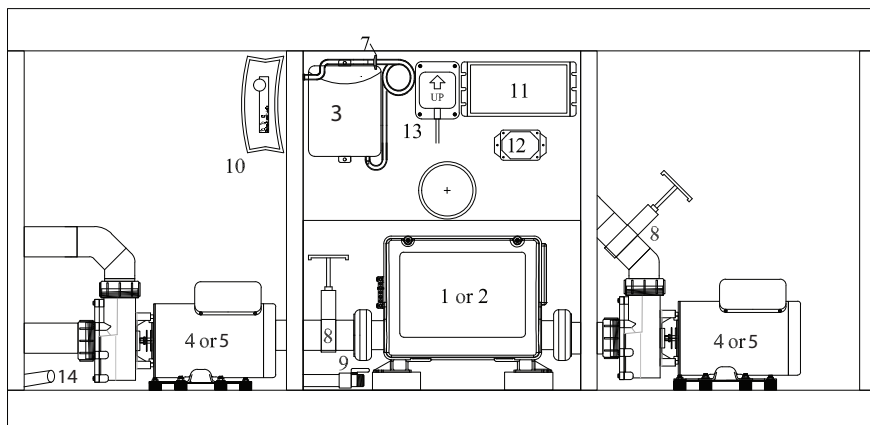
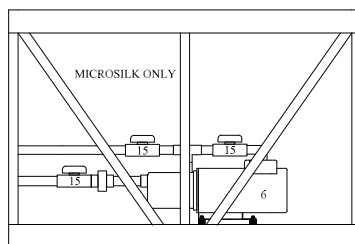
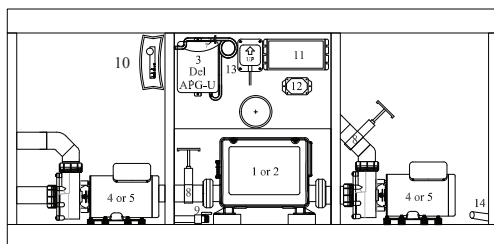
#	Component	Quantity
1	Control Box and Heater	1
3	Ozonator	1
4	Pump	1
7	Check Valve	1
8	Slice Valves	2
9	Drain Valve	1
10	GFCI	1
11	Constellation Light (option)	1
12	Power Supply (option)	1
13	Bluetooth (option)	1
15	Wi-Fi Transceiver (option)	1
16	Electrical Conduit	1

**SPIRIT 120V**


#	Component	Quantity
1	Control Box and Heater	1
2	Ozonator	1
3	Pump	1
6	Check Valve	1
7	Slice Valves	2
8	Drain Valve	1
9	GFCI Cord	1
10	Constellation Light (option)	1
11	Power Supply (option)	1
12	Bluetooth (option)	1
13	Wi-Fi Transceiver (option)	1

**SPIRIT 240V**


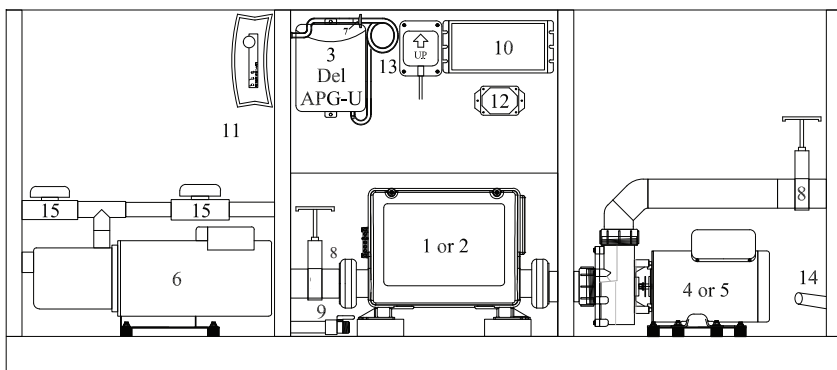
#	Component	Quantity
1	Control Box and Heater	1
2	Ozonator	1
3/4	Pumps	2
5	MicroSilk Pump (option)	1
6	Slice Valves	2
7	Drain Valve	1
8	MicroSilk Shutoff Valves	3
9	Constellation Light (option)	1
10	Power Supply (option)	1
12	Bluetooth (option)	1
13	Wi-Fi Transceiver (option)	1
14	Electrical Conduit	1

**REWARD**

**RESORT**


#	Component	Quantity
1	Control Box and Heater	1
3	Ozonator	1
4/5	Pumps	2
6	MicroSilk pump	1
7	Check Valve	1
8	Slice Valves	2
9	Drain Valve	1
10	Bluetooth (option)	1
11	Power Supply (option)	1
12	Constellation™ LED Control (option)	1
13	Wi-Fi Transceiver (option)	1
14	Electrical Conduit	1
15	MicroSilk Shutoff Valve (option)	3

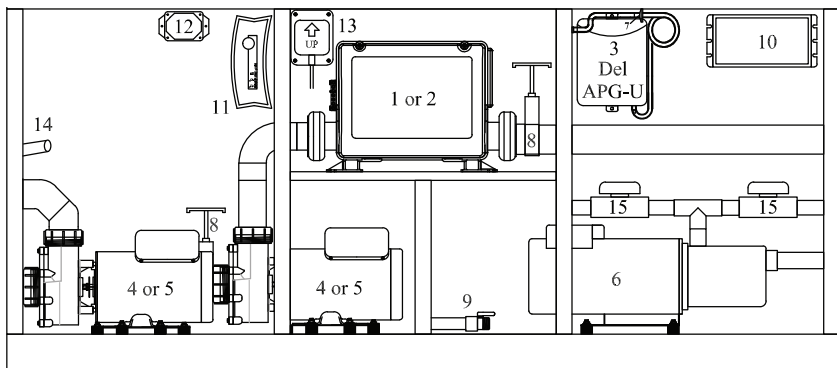


## PROMISE 1 PUMP EQUIPMENT DIAGRAM



#	Component	Quantity
1	Control Box and Heater	1
3	Ozonator	1
4	Pump	1
6	MicroSilk® Pump (option)	1
7	Check Valve	1
8	Slice Valves	2
9	Drain Valve	1
10	Power Supply (option)	1
11	Bluetooth (option)	1
12	Constellation™ LED Control (option)	1
13	Wi-Fi Transceiver (option)	1
14	Electrical Conduit	1
15	MicroSilk Shutoff Valve (option)	2

## PROMISE 2 PUMP, EPIC, EUPHORIA, WISH EQUIPMENT DIAGRAM



#	Component	Qty	#	Component	Qty
1	Control Box and Heater	1	10	Power Supply (opt)	1
4/5	Pumps	2	11	Bluetooth (opt)	1
3	Ozonator	1	12	Constellation™ Control (opt)	1
7	Check Valve	1	13	Wi-Fi Transceiver (opt)	1
8	Slice Valves	2	14	Electrical Conduit	1
9	Drain Valve	1			

[illegible]

#	Component	Quantity
1	Control Box and Heater	1
3	Pumps*	3
5	Ozonator	1
6	Check Valve	1
7	Slice Valves	2
8	Drain Valve	1
9	Power Supply (option)	1
10	Bluetooth (option)	1
11	Constellation™ LED Control (option)	1
12	Wi-Fi Transceiver (option)	1
13	Electrical Conduit	1
*	Auxiliary pumps are located in the corners	



**PLEASE NOTE:** The following corrective actions may be performed by the spa owner. If the trouble cannot be corrected in the steps below, please contact your authorized Marquis® dealer for service. (Improper servicing by an unauthorized service provider or spa owner could result in damage not covered by the warranty and could cause serious injury.)

### EQUIPMENT WILL NOT OPERATE

- Check the control panel LCD window for diagnostic code.
- 240V Spas: Check the circuit breaker on the main circuit panel.
- 120V Spas: Check the GFCI power cord and reset if necessary (see **IMPORTANT SAFETY INSTRUCTIONS** at beginning of manual).
- Check the condition of the power cord.

### INADEQUATE JET ACTION

- Be sure the shut-off valves in the equipment area are completely open.
- Open the jets by turning the jet face to allow for maximum water flow.
- Check that the air control valve is open (rotate valve counterclockwise).
- Check for obstruction or restrictions at suction guard(s) or filters, such as leaves, etc.

### JET VALVES ARE HARD TO OPERATE

- Valves and rotating jets that become hard to turn is an indication of sand, dirt or too high calcium level in the water.
- Remove components and rinse before damage occurs.
- Advise bathers to shower or use a foot bath before entering the spa. Failure to use or maintain valves as directed may cause damage by introduction of foreign materials such as dirt, sand and calcium that is not covered under the warranty.

### NO HEAT

- Check temperature displayed in the LCD window for desired temperature setting.
- Inspect the filter cartridge(s) for dirt and debris.
- Check that the water is at proper level, 2/3 up the Vortex skimmer opening(s).
- Check HEAT MODE to be certain spa is not in REST MODE.
- Lower ambient temperatures may result in heat loss.

**NOTE:** Do not expect instant hot water from the jets. It will take the heater 12- 24 hours to heat the water to the temperature you desire.





## **GENERAL MESSAGES**

Most messages and alerts will appear at the bottom of the normally used screens. Several alerts and messages may be displayed in a sequence. Some messages can be reset from the panel. Messages that can be reset will appear with a “right arrow” at the end of the message. This message can be selected by navigating to it at pressing the Select button.

---°F ---°C

### **Water temperature is unknown.**

After the pump has been running for 1 minute, the temperature will be displayed.

### **Pump Priming Mode - M019**

The pump is in priming mode, you may bypass by pushing any button.

### **Possible freezing condition**

A potential freeze condition has been detected, or the Aux Freeze Switch has closed. All water devices are activated. In some cases, pumps may turn on and off and the heater may operate during Freeze Protection. This is an operational message, not an error indication.

### **The water is too hot - M029**

The system has detected a spa water temp of 110°F (43.3°C) or more, and the spa functions are disabled. System will auto reset when the spa water temp is below 108°F (42.2°C). Check for extended pump operation or high ambient temp.

## **HEATER-RELATED MESSAGES**

### **The water flow is low - M016**

There may not be enough water flow through the heater to carry the heat away from the heating element. Heater start up will begin again after about 1 minute. See “Flow Related Checks” below.

### **The water flow has failed\* - M017**

There is not enough water flow through the heater to carry the heat away from the heating element and the heater has been disabled. See “Flow Related Checks” below. After the problem has been resolved, you must press any button to reset and begin heater start up.

### **The heater may be dry\* - M028**

Possible dry heater, or not enough water in the heater to start it. The spa is shut down for 15 min. Press any button to reset the heater start up. See “Flow Related Checks” below.

### **The heater is too hot\* - M30**

One of the water temp sensors has detected 118°F (47.8°C) in the heater and the spa is shut down. You must clear the message when water is below 108°F (42.2°C). See “Flow Related Checks” below.

## **Flow-Related Checks**

Check for low water level, suction flow restrictions, closed valves, trapped air, too many closed jets and pump prime.

On some systems, even when spa is shut down by an error condition, some equipment may occasionally turn on to continue monitoring temperature or if freeze protection is needed.

**SENSOR-RELATED MESSAGES****Sensors are out of sync - M015**

The temperature sensors MAY be out of sync by 2°F or 3°F. Call for service.

**Sensors are out of sync -- Call for service\* - M026**

The temperature sensors ARE out of sync. The fault above has been established for at least 1 hour. Call for service.

**Sensor A Fault, Sensor B Fault - Sensor A: M031, Sensor B: M032**

A temperature sensor or sensor circuit has failed. Call for service.

**MISCELLANEOUS MESSAGES****Communications error**

The control panel is not receiving communication from the System. Call for service.

**Test software installed**

The Control System is operating with test software. Call for service.

**°F or °C is replaced by °T**

The Control System is in Test Mode. Call for service.

**SYSTEM-RELATED MESSAGES****Program memory failure\* - M022**

At Power-up, the system has failed the Program Checksum Test. This indicates a problem with the firmware (operation program) and requires a service call.

**The settings have been reset (Persistent Memory Error)\* - M021**

Contact your dealer or service organization if this message appears on more than one power-up.

**The clock has failed\* - M020**

Contact your dealer or service organization.

**Configuration error (Spa will not start up)**

Contact your dealer or service organization.

**The GFCI test failed (System could not test the GFCI) - M036**

(North America only) May indicate an unsafe installation. Contact your dealer or service organization.

**A pump may be stuck on - M034**

Water may be overheated. POWER DOWN THE SPA. DO NOT ENTER THE WATER. Contact your dealer or service organization.

**Hot fault - M035**

A pump appears to be stuck ON when spa was last powered. POWER DOWN SPA IMMEDIATELY. DO NOT ENTER THE WATER. Contact dealer or service organization.

\*This message can be reset from the topside panel by pressing any button.



**PLEASE NOTE:** The following corrective actions may be performed by the spa owner. If the trouble cannot be corrected in the steps below, please contact your authorized Marquis® dealer for service. (Improper servicing by an unauthorized service provider or spa owner could result in damage not covered by the warranty and could cause serious injury.)

### EQUIPMENT WILL NOT OPERATE

- Check the control panel LCD window for diagnostic code.
- 240V Spas: Check the circuit breaker on the main circuit panel.
- 120V Spas: Check the GFCI power cord and reset if necessary (see **IMPORTANT SAFETY INSTRUCTIONS** at beginning of manual).
- Check the condition of the power cord.

### INADEQUATE JET ACTION

- Be sure the shut-off valves in the equipment area are completely open.
- Open the jets by turning the jet face to allow for maximum water flow.
- Check that the air control valve is open (rotate valve counterclockwise).
- Check for obstruction or restrictions at suction guard(s) or filters, such as leaves, etc.

### JET VALVES ARE HARD TO OPERATE

- Valves and rotating jets that become hard to turn is an indication of sand, dirt or too high calcium level in the water.
- Remove components and rinse before damage occurs.
- Advise bathers to shower or use a foot bath before entering the spa. Failure to use or maintain valves as directed may cause damage by introduction of foreign materials such as dirt, sand and calcium that is not covered under the warranty.

### NO HEAT

- Check temperature displayed in the LCD window for desired temperature setting.
- Inspect the filter cartridge(s) for dirt and debris.
- Check that the water is at proper level, 2/3 up the Vortex skimmer opening(s).
- Check HEAT MODE to be certain spa is not in REST MODE.
- Lower ambient temperatures may result in heat loss.

**NOTE:** Do not expect instant hot water from the jets. It will take the heater 12- 24 hours to heat the water to the temperature you desire.



## **GENERAL MESSAGES**

Most messages and alerts will appear at the bottom of the normally used screens. Several alerts and messages may be displayed in a sequence. Some messages can be reset from the panel. Messages that can be reset will appear with a “right arrow” at the end of the message. This message can be selected by navigating to it at pressing the Select button.

---°F ---°C

### **Water temperature is unknown.**

After the pump has been running for 1 minute, the temperature will be displayed.

### **Pump Priming Mode - M019**

The pump is in priming mode, you may bypass by pushing any button.

### **Possible freezing condition**

A potential freeze condition has been detected, or the Aux Freeze Switch has closed. All water devices are activated. In some cases, pumps may turn on and off and the heater may operate during Freeze Protection. This is an operational message, not an error indication.

### **The water is too hot - M029**

The system has detected a spa water temp of 110°F (43.3°C) or more, and the spa functions are disabled. System will auto reset when the spa water temp is below 108°F (42.2°C). Check for extended pump operation or high ambient temp.

## **HEATER-RELATED MESSAGES**

### **The water flow is low - M016**

There may not be enough water flow through the heater to carry the heat away from the heating element. Heater start up will begin again after about 1 minute. See “Flow Related Checks” below.

### **The water flow has failed\* - M017**

There is not enough water flow through the heater to carry the heat away from the heating element and the heater has been disabled. See “Flow Related Checks” below. After the problem has been resolved, you must press any button to reset and begin heater start up.

### **The heater may be dry\* - M028**

Possible dry heater, or not enough water in the heater to start it. The spa is shut down for 15 min. Press any button to reset the heater start up. See “Flow Related Checks” below.

### **The heater is too hot\* - M30**

One of the water temp sensors has detected 118°F (47.8°C) in the heater and the spa is shut down. You must clear the message when water is below 108°F (42.2°C). See “Flow Related Checks” below.

## **Flow-Related Checks**

Check for low water level, suction flow restrictions, closed valves, trapped air, too many closed jets and pump prime.

On some systems, even when spa is shut down by an error condition, some equipment may occasionally turn on to continue monitoring temperature or if freeze protection is needed.

**SENSOR-RELATED MESSAGES****Sensors are out of sync - M015**

The temperature sensors MAY be out of sync by 2°F or 3°F. Call for service.

**Sensors are out of sync -- Call for service\* - M026**

The temperature sensors ARE out of sync. The fault above has been established for at least 1 hour. Call for service.

**Sensor A Fault, Sensor B Fault - Sensor A: M031, Sensor B: M032**

A temperature sensor or sensor circuit has failed. Call for service.

**MISCELLANEOUS MESSAGES****Communications error**

The control panel is not receiving communication from the System. Call for service.

**Test software installed**

The Control System is operating with test software. Call for service.

**°F or °C is replaced by °T**

The Control System is in Test Mode. Call for service.

**SYSTEM-RELATED MESSAGES****Program memory failure\* - M022**

At Power-up, the system has failed the Program Checksum Test. This indicates a problem with the firmware (operation program) and requires a service call.

**The settings have been reset (Persistent Memory Error)\* - M021**

Contact your dealer or service organization if this message appears on more than one power-up.

**The clock has failed\* - M020**

Contact your dealer or service organization.

**Configuration error (Spa will not start up)**

Contact your dealer or service organization.

**The GFCI test failed (System could not test the GFCI) - M036**

(North America only) May indicate an unsafe installation. Contact your dealer or service organization.

**A pump may be stuck on - M034**

Water may be overheated. POWER DOWN THE SPA. DO NOT ENTER THE WATER. Contact your dealer or service organization.

**Hot fault - M035**

A pump appears to be stuck ON when spa was last powered. POWER DOWN SPA IMMEDIATELY. DO NOT ENTER THE WATER. Contact dealer or service organization.

\*This message can be reset from the topside panel by pressing any button.

## HOW TO PROLONG THE LIFE OF YOUR HOT TUB

There are some simple steps you can take to prolong the life of your hot tub. Please follow the guidelines listed below to ensure the most trouble free and enjoyable use of your spa.

### **Rinse your feet**

Please remember to rinse your feet before getting into the hot tub. This will help prevent sand and dirt from entering the plumbing system where it can clog valves and filters.

### **Use a suction sock**

Please also use a suction sock to further reduce the amount of debris that can enter the plumbing system.

### **Maintain your valves**

If one of your valves begins to feel hard to turn, please remove the valve and rinse it. To remove the valve, please turn the power off to the spa and remove the handle for the valve. Turn the top portion of the valve cap counter clockwise to expose the valve insert. Using the valve stem, please pull straight up on the insert. Rinse the valve and put back the insert into the sleeve and then replace the cap and handle. If the valve is scratched, it is a good idea to use a fine grit sand paper to smooth the valve insert before reinstallation.

### **Keep the cover on**

Always keep your hot tub cover closed when the spa is not in use. This helps prevent unwanted debris from entering the hot tub and prevents sun exposure that could damage the surface and the jets of the hot tub. For full warranty coverage, please note the spa must remain covered at all times when not in use.

### **Keep the water clear and balanced**

Water chemistry is another important part of spa ownership. Please be sure to use only factory recommended products. In addition, please make sure you maintain proper pH and sanitizer levels. Drain and refill your hot tub with fresh water every 3 to 4 months. On a regular basis, please use a spa vacuum to remove dirt and sand that can be seen on the floor of the hot tub.

## WEEKLY MAINTENANCE

### **Removing Debris**

Remove any debris and leaves from the Vortex skimmers and suction guard(s) on the inside of the spa. Blocked intakes can impede the flow of water through the jetting system.

### **Water Level**

Replenish the water level if necessary so that it is approximately two-thirds up the Vortex skimmer opening. (See STARTING YOUR SPA.) Low and high water levels can damage your spa. It is important to check your water level often.



### MONTHLY MAINTENANCE

#### Filter Care

We cannot stress enough the importance of a clean filter for proper water filtration. Dirty filters can restrict water flow, cause hazy water, and prevent your chemicals from working properly. Dirty filters can also cause low flow from jets, poor water clarity and sensors to activate error codes. It is important to clean filters regularly. Many water treatment products clear or clarify the water by clumping microscopic particles and minerals together so that these larger particles can be effectively trapped in the filter. A filter clogged with debris and calcium deposits does not trap particles properly. Soak your filter cartridges in *Filter Cleaner* monthly.

#### Removing the Filter

Twist lock the filter basket counter-clockwise and lift filter out.

#### Reinstalling the Filter

Repeat above directions.

**CAUTION:** Overtightening of the filter can cause the filter or filter housing to crack. Tighten filter until it is just snug.

**NOTE:** Filters and filter lids do not qualify for labor coverage. These parts can be purchased or exchanged under warranty at your authorized Marquis® dealer.

#### Leakage Detection

Open the equipment door and check for signs of water leakage around the pump(s). Pump seals wear out over time, especially with improper water chemistry. Early detection of pump seal failure can significantly reduce repair costs. Pump seals, heater gaskets and pump gaskets must be checked each month to ensure they are not leaking. Further damage caused by a leak from any component is not covered under the warranty.

## EVERY THREE TO FOUR MONTHS

### Draining and Filling the Spa

The average spa needs to be drained every three to four months. After months of continually adding chemicals to the water and introducing body oils and lotions, the water can be difficult to manage and chemicals are not as effective as usual. You may also notice excessive foaming. More frequent draining may be required depending on use.

### Draining the Spa

1. Turn off the power to the spa.
2. Open the equipment compartment (see EQUIPMENT DIAGRAM). Remove the hose bib cap from the connection and attach a hose.
3. Open the drain valve. Gravity causes the water to drain out of the hose.
4. When the spa is empty, close the drain valve and remove the hose. Reinstall the hose bib plug.

**NOTE:** Keep the drain valve closed at all times except when draining the spa (do not rely on the cap to stop the flow of water). Not doing so could result in damage to the drain valve due to freezing water.

### Replacing the Mineral Cartridge

The *In-line mineral cartridge* should be replaced every three to four months. You may still feel the “spent” minerals inside, but they are no longer effective and need to be replaced. (See ADJUST THE MINERAL CARTRIDGES, Blue Mineral Cartridge.)

### Clean the DuraShell® Interior

Once the spa is drained, clean the DuraShell interior thoroughly – especially at the water line. We suggest the *Glove Sponge* to clean without scratching.

*Marquis® Gloss & Guard or Spa Brite* is the recommended cleaning agent for DuraShell – other products should be avoided except as stated below.

To maintain the high gloss and elegant look of DuraShell®, just follow these simple steps: For normal care and cleaning use a soft cloth or sponge and water. Rinse well and dry with a soft, clean cloth. Never use abrasive cleaners. Do not allow your acrylic surface to come into contact with products such as ammoinia (Windex) ketones or esters such as acetone or ethyl acetate (nail polish remover), Wintergreen oil (methyl salicylate), nail polish, dry cleaning solution or other chlorinated organic solvents, lacquer thinners, gasoline, aromatic solvents, citrus cleaners, pine oil, etc. Remove dust and dry dirt with a soft, damp cloth. Clean grease, oil, paint and ink stains with diluted isopropyl (rubbing) alcohol (do not let alcohol pool or remain on acrylic). Dry with a clean, soft cloth. Avoid using razor blades or other sharp instruments that might scratch the surface.

**NOTE:** Due to the high-gloss, fine finish of the acrylics, imperfections in the surface texture may occur. A natural aging process in acrylic can lead to a process called crazing. Fine spider web-like lines can form on the cosmetic surface of acrylic over time after exposure to the elements and chemicals.





Crazing represents no structural weakening of acrylic and is not covered under the warranty. Fading, staining and discoloration may also occur but represent no structural degradation and are not covered under warranty.

**NOTE:** Do not leave an empty spa uncovered. Direct sunlight on the spa surface can cause severe damage or blemishing, cause fittings to discolor and can result in the voiding of any surface warranties.

### Refill the Spa

Fill the spa with fresh water from a garden hose and balance the water as described in the Water Treatment section. The use of a *Fill Filter* is recommended when filling especially in areas of high mineral content in the water. Attach to the end of a garden hose to filter out any grit and sediment that could accumulate in the spa and potentially scratch the spa surface.

## AS NEEDED MAINTENANCE

### Cover Care

It is recommended that you use Marquis *Cover Cleaner* to keep the Dura-Cover™ clean and conditioned. Proper care of the cover increases the life and keeps it looking great in even the harshest conditions. **NOTE:** Do not use regular household products or products that contain silicone, alcohol, steel wool, or bleach.

1. Remove the cover from the spa and gently lean it against a wall or fence.
2. Use a garden hose to spray the cover and loosen and rinse away dirt or debris.
3. Use a large sponge and/or soft bristle brush with a very mild soap solution. Scrub the vinyl top in a circular motion. Rinse vinyl clean before a soap film has a chance to dry.
4. Scrub the perimeter of the cover and side flaps. Rinse clean with water.
5. Rinse off underside of cover with water only (no soap) and wipe clean with a dry rag.
6. Use *Cover Cleaner* to condition the top of the cover after cleaning.

### Cushioned Headrest Care

To increase the life of your cushioned headrest, remove and replace them with care only when necessary.

### Remove Cushioned Headrest

Slip your fingers under each end of the interior cushioned headrest part and gently pull straight towards you. Damage caused to attachments due to improper removal is not covered under warranty. Pillows and attachments are warranted to be free of defects at delivery only.

### Exterior Care

Clean the exterior of the spa with a mild soap and water solution. Cleaners that contain alcohol or high levels of solvents, along with Acetone, Nitrobenzene, and Cyclohexanol, can dissolve and discolor the DuraWood exterior.

### Excess Debris

Grit and debris tracked into the spa should be removed with a spa vacuum.



### Water Line

To avoid buildup of oils and lotions at the water line, clean the interior weekly or when needed. We suggest the Glove Sponge to clean without scratching.

**NOTE:** Do not use the same brush or sponge to clean the exterior of the spa and the interior of the spa. Soap and other product residue used on the outside of the spa can cause foaming of the spa water and scratches to the spa surface if used on the inside of the spa.

### SUSPENDED USE OR WINTERIZING THE SPA

If you decide to discontinue the use of your spa for any extended period of time, we suggest you follow the steps below.

**NOTE:** During long periods of inactivity, damage can occur to equipment from condensation within the equipment compartment. Failure to follow these instructions during freezing conditions will result in cracked fitting(s) and glue joints, and other damage.

1. Turn off the power to the spa.
2. Drain the spa. (See DRAINING AND REFILLING THE SPA.)
3. Remove all residual water from the seating and footwell. If necessary, bail out the remaining water then dry the spa with towels. A wet/dry vacuum is recommended for best results.
4. Using the wet/dry vacuum, place vacuum nozzle over each jet nozzle to remove water from plumbing lines, starting with the highest jet and finishing with the lowest jet. **NOTE:** The spa is equipped with a Tri-Zone control which is used to divert water between different jet zones. The valve must be "open" to the particular jets you are vacuuming.
5. Unscrew the pump plug(s) from the pump(s).
6. Again, using the wet/dry vacuum, place nozzle over the exposed pump opening(s) to remove excess water. The pump(s) should be removed from the spa and stored in a climate-controlled room.
7. Clean the spa interior.
8. Clean the filter cartridges.
9. Reinstall the DuraCover™ and lock in place. **NOTE:** Direct sunlight on the spa surface can cause severe damage or blemishing and can result in the voiding of any surface warranties.

### VACATION CARE INSTRUCTIONS

#### Short time periods: 3-5 days

1. Adjust the pH (see WATER CARE).
2. Sanitize the water by following the shock procedures (See WATER CARE).
3. Lock your spa cover in place with cover locks.
4. Upon return, shock sanitize water.

#### Long time periods: 5-14 days

1. One day before leaving, set the temperature to approximately 80°F, 27°C.
2. Adjust pH as needed.
3. Shock sanitize water.
4. Upon return, shock sanitize water.
5. Return temperature to original setting.
6. Test water chemistry and adjust as necessary.

**IMPORTANT CHEMICAL SAFETY PROCEDURES**

1. Always keep chemicals out of reach of children.
2. Read product labels carefully prior to use.
3. When dissolving, always add chemicals to water, do not add water to chemicals. Some dry chemicals should be dissolved prior to adding them to the spa. Using a clean container, dip some water from the spa. Mix until dissolved, then add to circulating water.
4. **CAUTION:** Do not mix chemicals together. Add them separately to the spa water.
5. All chemical products should be stored in a cool, dry, well-ventilated area where the average temperature does not exceed 90°F (32°C). Keep storage area clean of debris such as rags, newspaper, and combustible materials.
6. Keep chemicals away from open flame or other heat source. Do not smoke near chemicals. If a dry chlorine chemical fire should occur, use water only. Do not use a dry chemical fire extinguisher to attempt to put out the fire.
7. When adding chemicals, always keep the water circulating in the spa with jets in a downward circular pattern for better chemical distribution. Add chemicals to the spa water one at a time. Allow several minutes between any new chemical additions using the jet action to evenly distribute throughout the spa.
8. It is important to leave the spa cover open for 20-30 minutes while shock treating your spa to avoid damage. Do not leave spa unattended while cover is open. Damage such as discoloration or brittle vinyl due to chemical damage is not covered under the warranty.
9. After adding chemicals, wait the amount of time recommended on the chemical container before retesting your water for an accurate reading. Retest your spa water before using.
10. If you have any questions or concerns about the correct procedures for handling chemicals, please contact your authorized Marquis® dealer.

**CAUTION:** Damage to the spa surface and equipment due to the use of trichlor chlorine, or other harsh chemicals not recommended by Marquis is not covered under warranty.

**WATER CARE**

There are three things necessary for clean safe water:

1. **CIRCULATE:** Water has to be circulated regularly; it can not be stagnant.
2. **FILTER:** Water has to be filtered to remove particulates and debris.
3. **SANITIZE:** Water has to be sanitized to kill organisms like algae, bacteria and virus.

It is critical to maintain proper water balance to protect the spa heater and other components from damage. Damage to the spa surface and equipment caused by poor chemical or harsh chemical treatment is not covered under the warranty. Discoloration of jet faces, valves and controls are an indication of poor chemical maintenance or exposure to the sun.

Jet inserts and valves do not qualify for labor coverage. These parts can be purchased or exchanged under warranty at your authorized Marquis® dealer. Gaskets and seals are not covered under the warranty. The control system in your Marquis spa will automatically circulate and filter. (See SPA CONTROL OPERATION, ConstantClean™ and SmartClean™ sections.) The sanitation requires minimal effort if done consistently and properly.

To sanitize spa water, three things are required:

1. **BALANCE:** The water must be balanced so the sanitizer can work and spa equipment is protected.
2. **SHOCK:** Shock to oxidize organics and maximize sanitizer efficiency.
3. **SANITIZE:** Maintain a proper level of sanitizer at all times.

## **UNDERSTANDING WATER BALANCE**

Water balance is the interrelation of factors that determine the quality of the spa water. The effectiveness of chemicals and other additives are dependent on all these factors working together or “in balance”. The primary elements to water balance are the calcium hardness, total alkalinity and pH. Always use water treatment products recommended for use in a Marquis spa.

### **pH Balance**

Keeping the pH balanced is the most critical component of water balance. Calcium hardness and total alkalinity act as buffers to stabilize the pH. When they are properly adjusted, the pH will be stable and easy to maintain. The pH is a measure of the relative acidity and basicity of the water. The ideal pH range is 7.4 - 7.6. When the pH falls below 7.2, the water can become corrosive. Low pH can cause damage to metal in the control system and heater, excessive sanitizer consumption, and skin irritation. A pH above 7.8 can be scale-forming and allow metals or minerals in the water to form deposits and stain spa surfaces. pH above 7.8 can also cause eye and skin irritation.

### **Total Alkalinity**

Alkalinity acts as a buffer to prevent the pH from changing as other substances are added to the water. Stability of the pH is directly related to the alkalinity. The alkalinity should be between 80 - 140 ppm. Alkalinity below 80 ppm makes it difficult to stabilize the pH. Alkalinity above 140 ppm may increase the pH and cause cloudy water, scaling, and decreased efficiency of the sanitizer.

**Note:** *Alkalinity Increaser & pH Increaser* and *Alkalinity & pH Decreaser* will affect both the pH and alkalinity. Generally, smaller additions will change the pH and have a very minor effect on the alkalinity. Larger additions will also affect the pH, but will have a much greater effect on the alkalinity. (Example: If the pH is very high and the alkalinity is within range, adding a few smaller doses of *pH and alkalinity Decreaser* instead of one large dose will reduce the pH with little effect on the alkalinity.)

## Calcium Hardness

Do not use soft water in your spa. It is critical to have calcium in your water. The ideal range of calcium is between 150 – 250 ppm. The calcium hardness is normally adjusted when filling or refilling after draining the spa. High calcium levels can cause scale buildup on spa surfaces and equipment. Your spa can be protected against high calcium by using *Metal & Stain Remover* per the directions on the container. Low calcium levels can cause spa water to become highly corrosive and damaging to the equipment components and plumbing. To raise calcium levels, use *Calcium Hardness Increase*.

## BALANCE

When initially filling or refilling your spa, follow these steps to achieve proper water balance.

**IMPORTANT!** Always follow instructions on the chemical container when adding chemicals.

1. Test the spa water using a test strip or test kit. Determine the pH and alkalinity of the water.
2. If adjustments are needed for the pH and/or alkalinity, always balance the alkalinity before balancing the pH. The product(s) you should use to adjust pH and/ or alkalinity are *pH Increaser*, *Alkalinity Increaser* or *pH & Alkalinity Decreaser*. Make any additions per the directions on the bottle and then test and repeat if necessary until all readings are in the desired range.
3. Increase the calcium hardness if necessary.

## SHOCK

### Initial Treatment

Shock the spa using granular *Chlorine Sanitizer* or non-chlorine *Spa Shock*. Add directly to the spa per the instructions on the container. For the initial treatment, *Chlorine Sanitizer* is preferred as it will also establish a residual of sanitizer. You may shock weekly using non-chlorine shock for low chlorine usage.

### Maintenance Treatment

Once bacteria and other wastes are neutralized by the sanitizer, they stay in the water unless oxidized or shocked. Often called chloramines or bromamines, they create dull, cloudy water and can cause odor and eye or skin irritation. Shock treatment rids your spa of these wastes for clear, sparkling water. Shocking with non-chlorine *Spa Shock* or granular *Chlorine Sanitizer* is recommended once a week or whenever the water appears dull or cloudy or has a strong odor. Non-chlorine *Spa Shock* allows use of the spa 15 minutes after shock treatment.

**NOTE:** A strong bromine or chlorine odor typically indicates the spa needs to be shocked – not that there is too much bromine or chlorine in the water. A properly balanced spa that is shocked regularly will not have an odor.

## SANITIZE

### ConstantClean+™ System (Marquis)

The ConstantClean+ system utilizes a combination of sanitizers to increase water quality and significantly decrease maintenance. The combination of a *In-Line Mineral Cartridge\** and the factory installed ozonator greatly reduce the amount of sanitizer required. Instead of the normal 3 - 5 ppm of bromine, you may only need to maintain 1 - 2 ppm of bromine.

**NOTE:** The use of *Spa Frog®* or *@ease floating cartridges* is recommended. Do not use other floating chemical dispensers or Biguanide. Damage to the spa shell and other internal components can occur.

\* The built-in sanitation system is not available in some international markets. However, the ozone system is available on all spa models in all countries. Please see your dealer for recommended alternate treatment method if the built-in sanitation system is not available.

### BUILT-IN SANITATION SYSTEM\*

After shocking the spa water with *Chlorine Sanitizer* granules or *1-Step Brominating Granules*, bring the spa water to operating temperature. Then install the *In-Line cartridges*.

### ADJUST THE MINERAL CARTRIDGE

Remove the protective cellophane wrap from the *In-Line mineral cartridge*. While holding the bottom of the cartridge, turn the top until the number six appears in the setting window.

**NOTE:** The mineral cartridge should be replaced every three to four months. You will still feel the "spent" minerals inside, but they are no longer effective and the cartridge needs to be replaced. It is recommended to drain and refill the spa at the same time you replace the mineral cartridge.

### ADJUST THE BROMINE OR CHLORINE CARTRIDGE

Remove the protective cellophane wrap from the *Spa Frog® bromine* or *@ease w/Smart Chlor cartridge*. Finding the right setting for the sanitizer cartridge will require monitoring your usage for the first few weeks. Begin with an initial setting based on the chart below and monitor sanitizer levels daily for the first week or so, adjusting the cartridge by one setting per day until a 3 - 5 ppm level has been achieved. To adjust cartridge, remove from system and turn to the next highest setting if the sanitizer level is low or the next lower setting if the sanitizer level is high. The sanitizer cartridge needs to be replaced when empty between two and four weeks. Always maintain 3 - 5 ppm of bromine or chlorine.

### Suggested *Initial Bromine* or *@ease w/Smart Chlor Cartridge* Settings

Daily filter time	Spa Gallons			
	-250	250-300	300-400	400-500
One hour	2	2	3	4
Two hours	2	2	2	3
Four hours	1	1	2	2



## INSTALL THE CARTRIDGES

Locate and remove the cartridge holder cap on the top lip of the spa. Push down and turn the holder counterclockwise to unlock. Lift holder out. Snap the *Spa Frog®* or *@ease mineral cartridge* into the area of the holder marked "MINERALS" (top portion), making sure to line up the indentation near the top of the cartridge with the raised line on the holder. Then snap the *Spa Frog® bromine* or *chlorine cartridge* into the area of the holder marked "BROMINE/CHLORINE". Be sure to line up the indentation on the cartridge with the raised line on the holder. After cartridges are snapped in, return the holder, push down, and then turn clockwise to lock into place. Replace the cap.

**CAUTION:** Hand-tighten only; avoid over tightening; avoid bending the holder to help prevent damage to the holder. Damage caused due to improper removal or installation of chemical cartridge holder is not covered under the warranty. Cartridge holder is warranted to be free from defects at time of delivery of spa. Chemical cartridge holders do not qualify for labor coverage. These parts can be purchased or exchanged under warranty at your authorized Marquis® dealer.

## REMOVE THE CARTRIDGES

Reverse above procedures to remove cartridges.

\*The built-in sanitation system is not available in some international markets. See your authorized Marquis® dealer for recommended alternate water treatment method.

## WATER CARE REGIMEN

Marquis SpaCare™ products are classified by easy to follow usage guidelines. The information below indicates whether the product should be used daily, weekly, monthly, when filling, or as needed – if special water conditions arise.

### DAILY

Sanitizer

Maintain 1 - 2 ppm of bromine, @ease or chlorine at all times.

### WEEKLY

Spa Shock

Sanitizer combines with bacteria and neutralizes sanitizer/bacteria on contact. However, the used sanitizer/bacteria particle is still present in the spa water. Used sanitizer in the water emits an odor and causes cloudy water. To oxidize, or rid the spa of this used sanitizer, you must shock the spa once a week. For best results, and to protect your spa cover leave the spa cover open for a minimum of 20 minutes after shocking the water.

**NOTE:** Additional shocking may be necessary if the spa is under heavy use. For @ease w/Smart Chlor (for use in the US only) you will only need to shock as needed or monthly.

**AS NEEDED PRODUCTS**

*pH Increaser, Alkalinity Increaser*

*pH & Alkalinity Decreaser*

These three products work to raise or lower the pH and alkalinity in the spa. They are only needed if the test strip indicates the levels are not in the ideal ranges.

**Water Clarifier**

Microscopic particles can pass through the spa filter and create cloudy water. The use of *Marquis SpaCare™ Water Clarifier* combines these microscopic particles into larger particles that can be trapped in the filter to clear cloudy water.

**Spa Defoamer**

If foam appears in your spa, the action of the jets will keep it from dissipating. The use of *Marquis SpaCare™ Spa Defoamer* instantly rids your spa water of foam.

**Metal and Stain Remover**

*Metal and Stain Remover* will remove metals such as iron and copper from spa water.





### WATER CARE TROUBLESHOOTING GUIDE

**NOTE:** If you request a service call and no problem is found with the spa or the problem is not covered by warranty (i.e. chemical damage), you will be charged at the regular service rate.

P: Problem

S: Solution

#### Cloudy Water

P: Inadequate filtration or dirty filter.

S: Ensure that the filter is securely installed. Clean or replace filter. Increase the length of clean up and/or filter cycles.

P: Water is not balanced.

S: Test water and adjust pH, alkalinity, and sanitizer as needed. Shock to oxidize and destroy organics in the water.

P: Unfiltered particles or chemically saturated.

S: Use *Water Clarifier* to combine particles.

P: High total dissolved solids

S: Drain, clean, and refill the spa.

#### Chemical Odor

P: Too many chloramines/bromamines in the water.

S: Treat water with *Spa Shock*, then adjust sanitizer level as necessary.

P: Dull looking water, difficult to manage. High total dissolved solids (TDS) may be the cause.

S: Drain, clean and refill with fresh water.

#### Musty Odor

P: Not enough sanitizer in water – bacteria or algae in water.

S: Add sanitizer as necessary and shock. Readjust sanitizer level if necessary.

#### Yellow Water

P: Low pH and/or low alkalinity.

S: Test and adjust pH with *pH and Alkalinity Increase*. Adjust alkalinity if necessary.

#### Foaming

P: High concentration of body oils, lotions or soaps, as well as excessive organics.

S: Use *Spa Defoamer* and adjust pH and sanitizer as needed.

#### Scum Line in Spa

P: Body oils and dirt.

S: Use *Glove Sponge* to clean the spa. Test and adjust the sanitizer and pH if necessary. Increase the clean up cycle.



### No Sanitizer Reading

- P: Sanitizer level is too low.
- S: Shock and/or adjust *sanitizer cartridge* until the sanitizer registers in the recommended range.
  
- P: Test strip remains “white” even after sanitizer has been added.
- S: Sanitizer level could be extremely high. It can bleach the reagents on the test strip and give a false reading. Remove spa cover and activate jets and air control. Allow jets to run for 30 minutes. Test water to see if desired level has been reached. Adjust *sanitizer cartridge* to reduce bromine or chlorine level.

### High Sanitizer Reading

- P: Too much chlorine or bromine added or dispensed into the spa.
- S: Remove spa cover and activate jets and air control. Allow jets to run for 30 minutes. Test water to see if desired level has been reached. Adjust *sanitizer cartridge* to reduce bromine or chlorine level.

### Eye or Skin Irritation

- P: Contaminants or excessive amount of chloramines/bromamines in water.
- S: Treat water with *Spa Shock*. Adjust sanitizer level.
  
- P: pH is low.
- S: Adjust as needed.

### Corrosion of Metal

- P: Low pH.
- S: Adjust pH with *pH and Alkalinity Increase*.

### Green Water/Algae

- P: Low sanitizer level or high pH.
- S: Adjust pH, shock and/or adjust *sanitizer cartridge* as necessary.

### Erratic pH

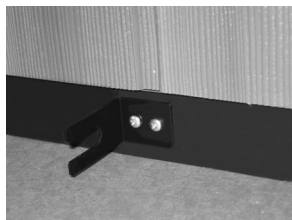
- P: Alkalinity and/or calcium hardness are too low causing pH “bounce”.
- S: Test and adjust alkalinity and/or calcium hardness to bring them into the ideal range.

## DURAWOOD STEP INSTALLATION (OPTION)

The DuraWood step and mounting brackets may be placed along a straight side of the spa, most often centered to the entry location.

Find the center of the spa side where you want to mount the step. Measure 27.5" (699mm) center spread and mark. Measure 1" (25mm) up from base and mark (see diagram).

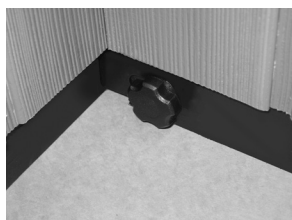
- With step mounting brackets facing outwards mark the two holes.
- Using the bracket as a guide, predrill two holes per bracket.
- Attach the left and right brackets to the spa exterior base (#1).
- The step hardware is factory-installed. Loosen the thumbscrew. Gently push step towards the spa until the brackets and hardware engage (#2).
- Tighten the thumbscrew to attach the step to the spa exterior (#3).



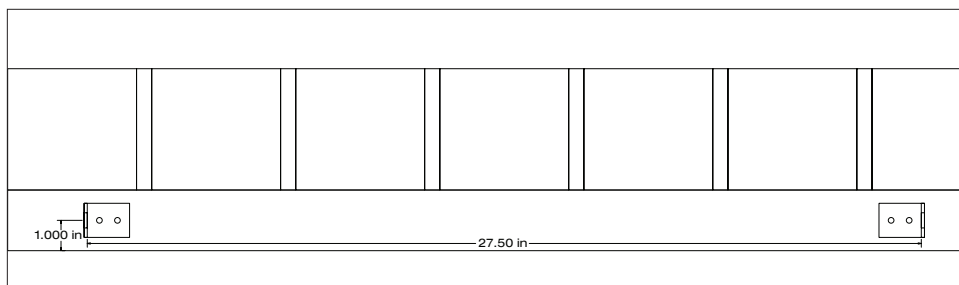
1



2



3



All steps can be inherently dangerous. Always use caution in stepping in and out of your spa.



### MARQUIS® LIMITED WARRANTY

(Show, Epic, Euphoria, Reward, Wish, Destiny, Promise, Resort, Spirit, Rendezvous)

#### What the Marquis Corp. Limited Warranty Covers

Marquis Corp. warrants that our products will be free from defects in materials and workmanship for the term set forth exclusively in this warranty. Accessories purchased from Marquis Corp. or a Marquis Corp. authorized Marquis® Dealer and added to the spa after manufacture of the spa are not covered under this warranty but may have other warranties. Refer to owner's manual for proper use, maintenance and installation of your spa. The Marquis® Limited Warranty, provided by this Owner's Protection Plan, is made only to the original purchaser of the spa and is not transferable.

#### [10] STRUCTURE

The reinforced structure is warranted for **10** years not to leak. Fittings and attachments are not included.

#### [7] SURFACE

The acrylic surface is warranted for **seven** years against blisters, cracks and delamination. The use of a non-Marquis DuraCover will void this warranty.

#### [5] PLUMBING

Plumbing and fittings are warranted against water loss for **five** years. Warranty coverage does not include gaskets or seals.

#### [5] EQUIPMENT

Electronic equipment is warranted against defects in materials and workmanship for **five** years. Equipment includes PC boards, pumps, control panels, heater and heat sensors. Adagio™ audio system and associated components have a separate warranty. MicroSilk® system and associated components has a **three** year parts and labor warranty.

#### [5] EXTERIOR

The synthetic skirt and DuraBase exterior are warranted against cracking and peeling for **five** years.

#### [2] COMPONENTS

The ozonator and GFCI cord are warranted against defects in material and workmanship for **two** years.

#### [1] PARTS

LED lights, RF sensors, remote controls, valves, spa cover, jet inserts, in-line sanitation system and overlays are covered for **one** year. These parts do not qualify for labor coverage under this warranty.

Fuses, non-LED lights, wood exterior, filter, filter lid, cushioned headrests, chemical cartridge holders and other items not specifically mentioned in this warranty are warranted to be free from defects in materials and workmanship at time of delivery. These parts do not qualify for labor coverage under this warranty.

**Term of the Marquis Corp. Limited Warranty**

The term of your warranty begins on the date the product is sold to you and continues for the term described in this warranty for each component.

**What You Should Do if You Experience a Problem**

Unless otherwise designated in writing by Marquis Corp., Marquis Corp. or its agent are the only parties authorized to perform warranty service on Marquis Corp. spas. Upon experiencing a problem, please contact your authorized Marquis® dealer.

You will be asked to provide the following information when requesting warranty service: your name, address and contact information; serial number; a description of your spa and a description of the problem. You may be required to provide proof of purchase of your spa prior to receiving warranty service.

**What Marquis Corp. Will Do in the Event of a Problem**

Marquis Corp. agrees to repair any plumbing or surface defects and to repair or furnish a replacement for any factory-installed component covered under this warranty which, upon test and examination by Marquis Corp., proves to have manufacturing defects. All materials for examination must be returned to Marquis Corp. freight prepaid.

Marquis Corp. will provide parts and labor (according to predetermined schedule) at no charge to repair or replace components that fail due to manufacturing defects. Responding authorized Marquis® dealer may charge additional service and travel fees.

In the event that Marquis Corp. or its agent determines that your problem can be addressed by providing a replacement part to you for installation in your spa, a replacement part will be provided to you at no charge when you return the defective part. All replacement parts assume the original warranty status of the spa into which they are installed, including time remaining on warranty, and have no separate or independent warranty of any kind.

To facilitate repairs, Marquis Corp. or its agent may require access to spa equipment. It is your responsibility to provide unencumbered access.

**What the Marquis Corp. Limited Warranty Does Not Cover**

No warranty will apply to any spa that has been (i) modified, altered or adapted without Marquis Corp.'s written consent; (ii) maltreated or used in a manner other than in accordance with the spa Owner's Manual; (iii) repaired by any third party not authorized by Marquis Corp.; (iv) improperly installed by any party; (v) used with equipment not covered by this warranty, to the extent that problems are attributable to such use; (vi) relocated to the extent that problems are attributable to the relocation; (vii) located on any support surface other than specified in the spa printed instructions; and commercial installations. Refer to instructions in the owner's manual for proper use, maintenance and installation of your spa.



Other items not included in this warranty are freight expenses; labor and material cost associated with removal and or replacement of the spa; damage to or fading of the spa surface and staining of the spa surface or equipment caused by impact, scratching, abrasive or corrosive cleaners; damage due to extreme water temperatures outside the range of 32°F to 120°F (0°C to 49°C) under any circumstances; or damage to the spa surface or equipment caused by acts of nature, including wind and power surges. Damage to the spa surface and fittings caused by leaving the spa uncovered and empty of water with direct exposure to sunlight may cause solar heat distress and also invalidates this warranty.

Other costs not associated with the direct repair of the spa, such as phone charges and missed work are not included in this warranty. In the event that the Marquis Corp. serial number tag on the spa has been removed or tampered with, the warranty will be void. Customer may not dismantle spas, and any attempt to dismantle systems, other than described herein, constitutes a modification or alteration of the spa which voids the applicable warranty.

### **LIMITATIONS**

Your sole and exclusive remedy and Marquis Corp.'s entire liability in connection with manufacture and sales of its spa products is repair or replacement (at Marquis' option) of a defective part, as expressed in the limited warranty. Any other express or implied representation or warranty, including the implied warranties of merchantability and of fitness for a particular purpose as well as non-infringement, is excluded to the maximum extent permitted by law.

Except as may be required by applicable law, Marquis Corp. shall not be liable for injury, loss, or damage to person or property, however arising, in connection with manufacture or sale of its spa products. This includes indirect, punitive, special, incidental, or consequential damages (including but not limited to loss of use) whether the claim for such injury, loss, or damage is based on breach of contract, breach of warranty, or tort, even if Marquis Corp. has previously been advised of the possibility of such damages.

**IMPORTANT:** Some jurisdictions do not allow the exclusion or limitation of incidental or consequential damages, therefore the limitation or exclusions may not apply to you.

### **DISCLAIMERS**

There are no additional warranties, express or implied, which extend beyond the terms of this limited warranty. Marquis Corp. makes no warranty of merchantability of the goods or the fitness of the goods for a particular purpose.

This warranty gives you specific legal rights. You may also have other rights that may vary from state to state.

**ADAGIO™ AUDIO SYSTEM ONE YEAR LIMITED WARRANTY**

Marquis Corp. warrants to the original retail purchaser, the components of the Adagio™ audio system will be free from defects in material and workmanship for a period of one year from date of purchase. One year coverage includes parts and labor. Optional remote and IR/RF sending unit not included in this warranty; other warranties may apply from the original manufacturer of the optional remote. The Adagio™ audio system Limited Warranty is made only to the original purchaser of the spa and is not transferable.

In no event shall any obligation of Marquis Corp. extend beyond the original period of any applicable warranty determined according to the effective warranty date of the original purchaser.

**PERFORMANCE OF WARRANTY**

Marquis Corp. agrees to repair or furnish a replacement for any defects in Adagio™ audio system material or workmanship which upon test and examination by Marquis Corp. proves defective. Adagio™ audio components including CD player/radio, speakers, subwoofer, stereo access door, power supply are warranted against defects in material and workmanship for one year. Labor to replace audio components is covered for one year. Water intrusion of any kind is not covered. All materials for examination must be returned to Marquis Corp. freight prepaid.

Your authorized Marquis® Dealer reserves the right to assess travel charges for service calls.

**INVALIDATION OF WARRANTY**

This warranty is void if the Adagio™ audio system has been subjected to alteration, misuse or abuse or if any repairs on the Adagio™ audio system are performed or attempted by anyone other than an authorized Marquis Corp. service center. Alteration is defined as any component change, electrical conversion or the addition of any alternative sound system components which contribute to component failure.

Misuse and abuse shall include without limitation any external power source attached to the Adagio™ audio system other than approved source, or use in a particular manner that the Adagio™ audio system was not designed, or operation of the Adagio™ audio system other than in accordance with Marquis Corp. printed instruction (located in the Owner's Manual) that leads to any component failure. Under no circumstances shall Marquis Corp. or any of its representatives be held liable for injury to any person or damage to any property, however arising. Other costs not associated to the direct repair of the spa, such as phone charges, missed work, and damage caused to the Adagio™ audio system beyond Marquis® control, are not included in this warranty. Items beyond Marquis® control include but are not limited to damage resulting from: improper connections, accidents, failure to follow procedures defined in the Owner's Manual, damaged from excessive wattage to the system, lightning, extreme temperatures or any other natural occurrences.



**IMPORTANT:** Some jurisdictions do not allow the exclusion or limitation of incidental or consequential damages, therefore the limitation or exclusions may not apply to you.

**DISCLAIMERS**

There are no additional warranties, express or implied, which extend beyond the terms of this limited warranty. Marquis Corp. makes no warranty of merchantability of the goods or the fitness of the goods for a particular purpose.

No other person or entity has been authorized to make any warranty, representation or promise of performance not included in this express written warranty, and Marquis Corp. shall not be bound by any such additional warranty, representation or promise.

This warranty gives you specific legal rights. You may also have other rights that may vary from state to state.