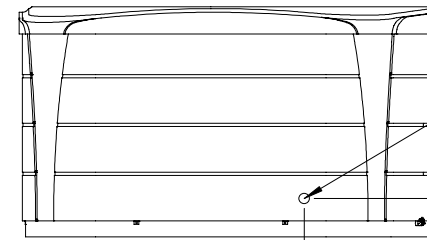


RIGHT VIEW
(MICROSILK VALVE SIDE, OPTIONAL)

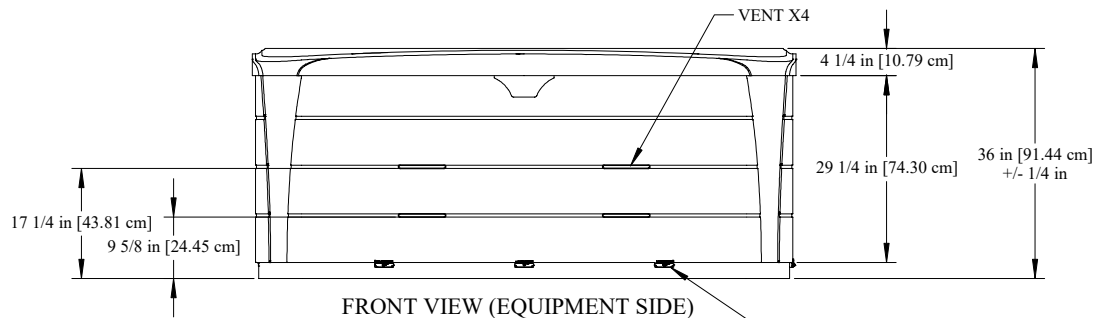
PANEL LATCH X2
ONLY WITH MICROSILK OPTION



LEFT VIEW

ELECTRICAL CORD HOLE

6 in [15.24 cm]
21 in [53.34 cm]
+/- 1/2 in



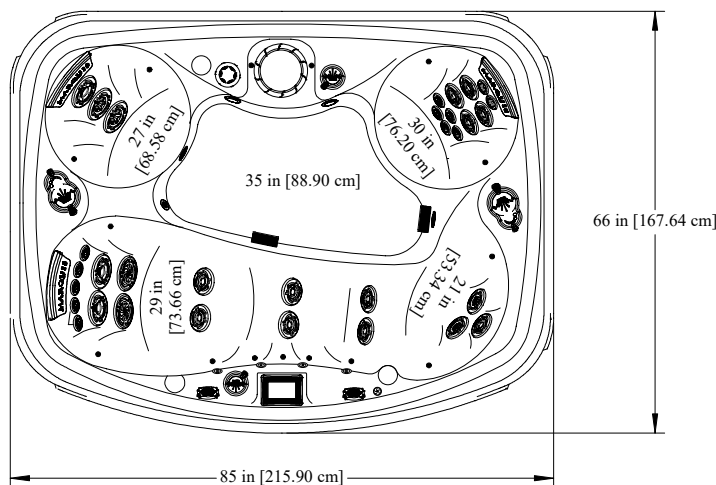
FRONT VIEW (EQUIPMENT SIDE)

VENT X4

PANEL LATCH X3

17 1/4 in [43.81 cm]
9 5/8 in [24.45 cm]

4 1/4 in [10.79 cm]
29 1/4 in [74.30 cm]
36 in [91.44 cm]
+/- 1/4 in

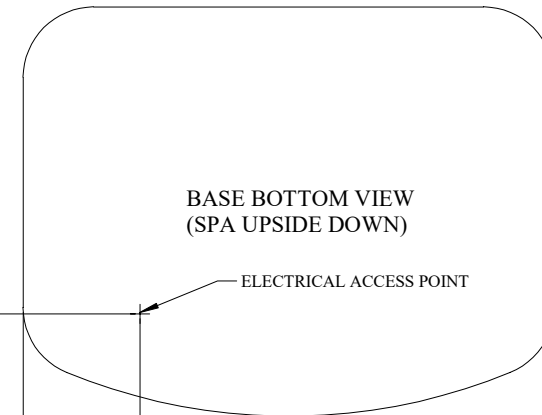


ALL DEPTHS MEASURED
FROM THE TOP OF SPA LIP

66 in [167.64 cm]

85 in [215.90 cm]

27 in [68.58 cm]
35 in [88.90 cm]
30 in [76.20 cm]
29 in [73.66 cm]
21 in [53.34 cm]



BASE BOTTOM VIEW
(SPA UPSIDE DOWN)

ELECTRICAL ACCESS POINT

16 in [40.64 cm]

18 in [45.72 cm]

EQUIPMENT DOOR SIDE

REV:0



PROPRIETARY AND CONFIDENTIAL
THIS DOCUMENT CONTAINS CONFIDENTIAL
AND PROPRIETARY INFORMATION THAT
CANNOT BE REPRODUCED OR DIVULGED, IN
WHOLE OR IN PART, WITHOUT THE WRITTEN
AUTHORIZATION FROM MARQUIS CORP.

TITLE: CROWN SPIRIT
DIMENSIONS

SCALE: 1:30

DATE: 1/18/21